



Webinar Presentation

# Make smarter trading decisions with Active Trader Pro<sup>®</sup>

BROKERAGE: **ATP**





# Agenda



# Access ATP

# Powerful Investors Need Powerful Technology



## Real-time Analytics

Spot your next great trading opportunity in real time and stay in the know with clear, actionable alerts.

## Trade Armor®

Define entry and exit strategies, visualize a trade's potential risk and reward on a chart, and stay on top of price movements with alerts.

## Daily Dashboard

Real-time news, earnings announcements, and economic events are all at a-glance.



# Access ATP



[CUSTOMER SERVICE](#) | [PROFILE](#) | [OPEN AN ACCOUNT](#) | [REFER A FRIEND](#) | [LOG IN](#)

[Accounts & Trade](#) | [Planning & Advice](#) | [News & Research](#) | [Investment Products](#) | [Why Fidelity](#)

[Home](#) » [Investment Products](#) » [Trading](#) » [Advanced Trading Tools](#) »

[Print](#) | [Email](#) | [Share](#) | [AAA](#)

[Trading Overview](#)

WHAT WE OFFER

[The Fidelity Account](#)

INVESTMENTS AND SERVICES

[Investment Choices](#)

[Commissions, Margin Rates, and Fees](#)

[Online Trading](#)

[Mobile Trading](#)

[Commitment to Execution Quality](#)

ADVANCED TRADING

[Trader Solutions](#)

[Compare Service Levels](#)

## Powerful technology for active investors

Make smarter trading decisions before, during, and after the trade with Active Trader Pro®. Get real-time insights, visual snapshots to monitor your investments, and powerful trading tools.

[Get Active Trader Pro®](#)

Call a specialist to advance your trading strategy at **800-564-0211**.



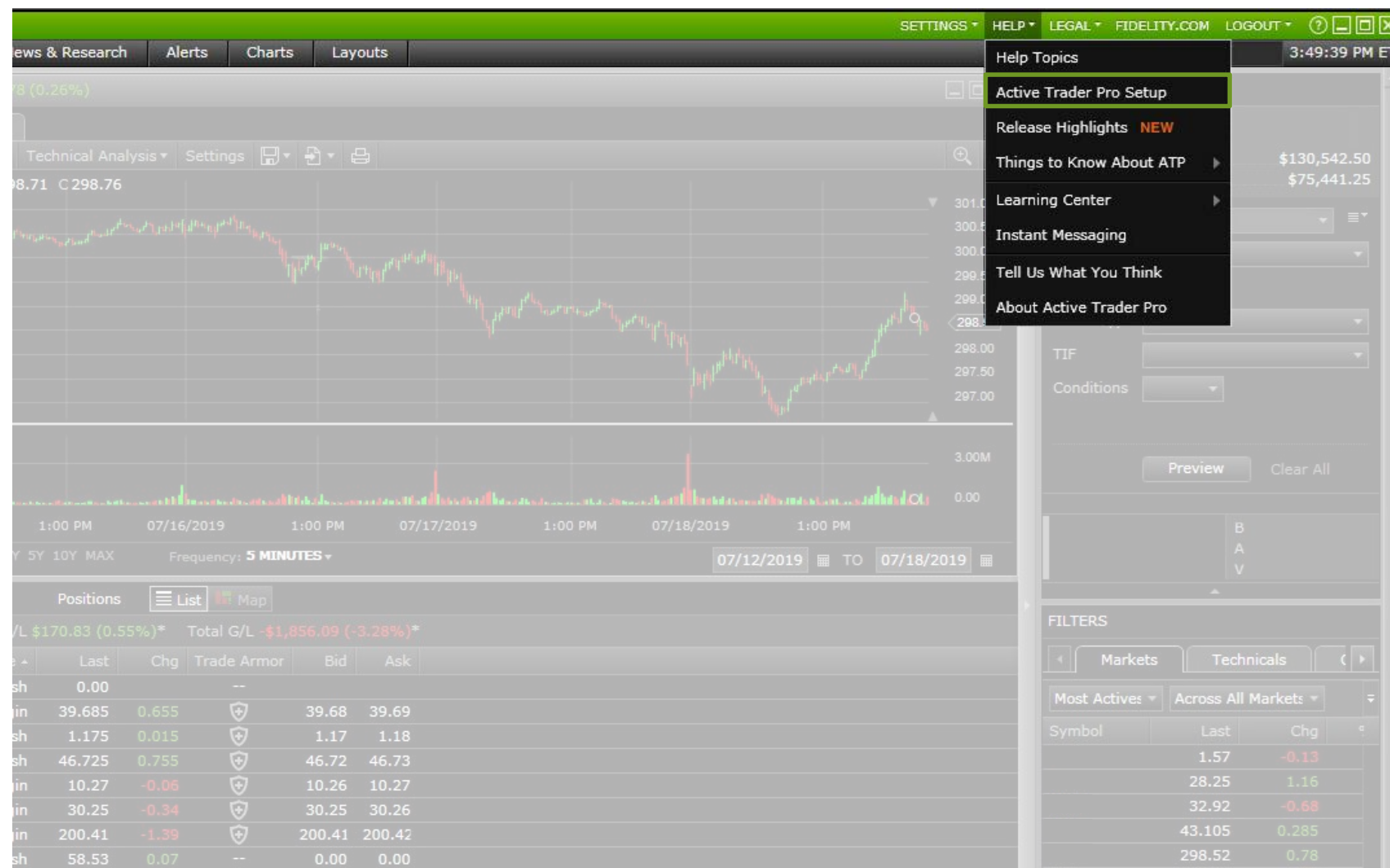
# Navigate ATP

# Getting Started with the Setup Wizard



## Help Tab

## Active Trader Pro Setup



# Getting Started with the Setup Wizard

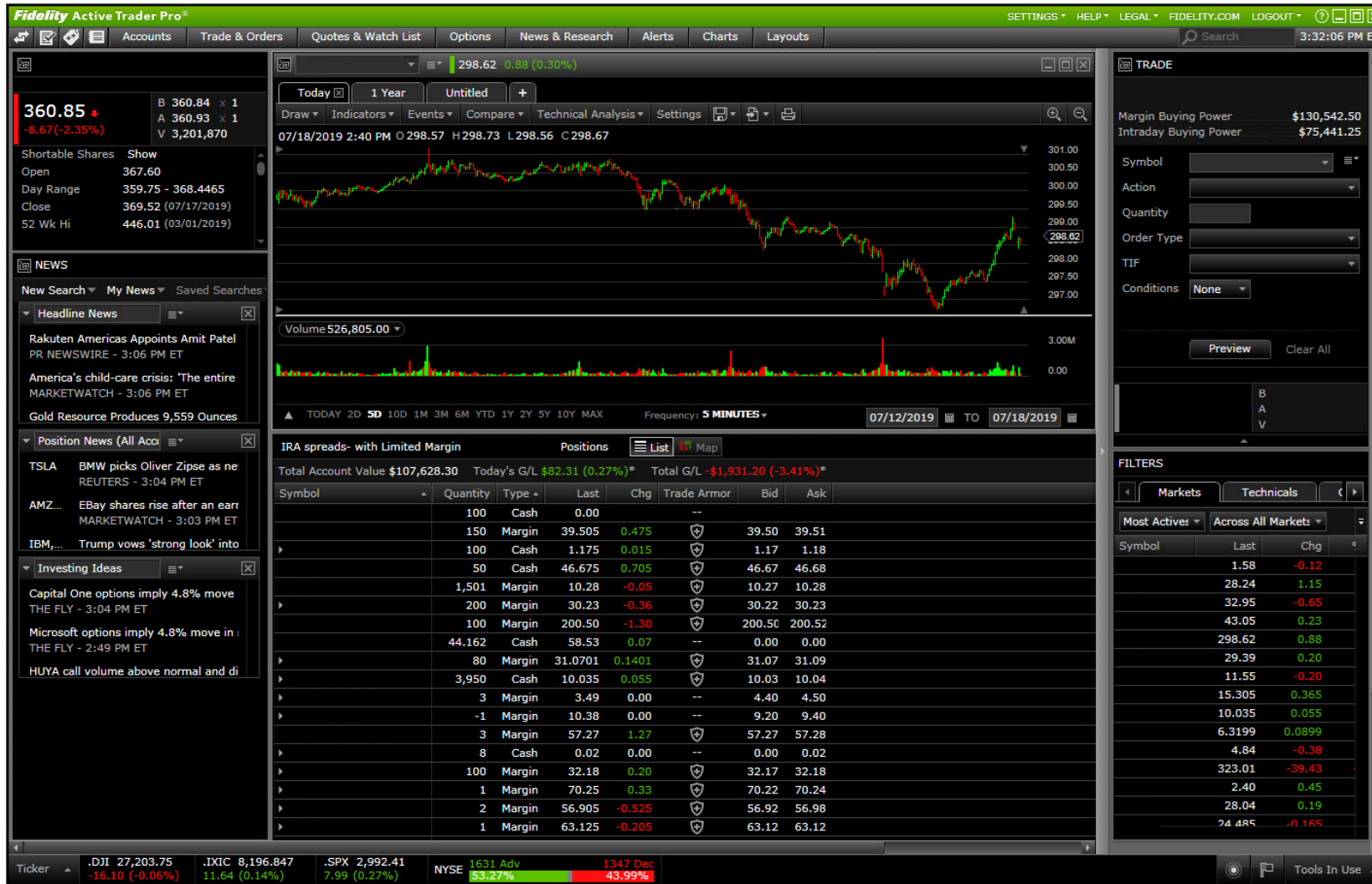
Help Tab

Active Trader Pro Setup





# Welcome to Active Trader Pro



# Accounts



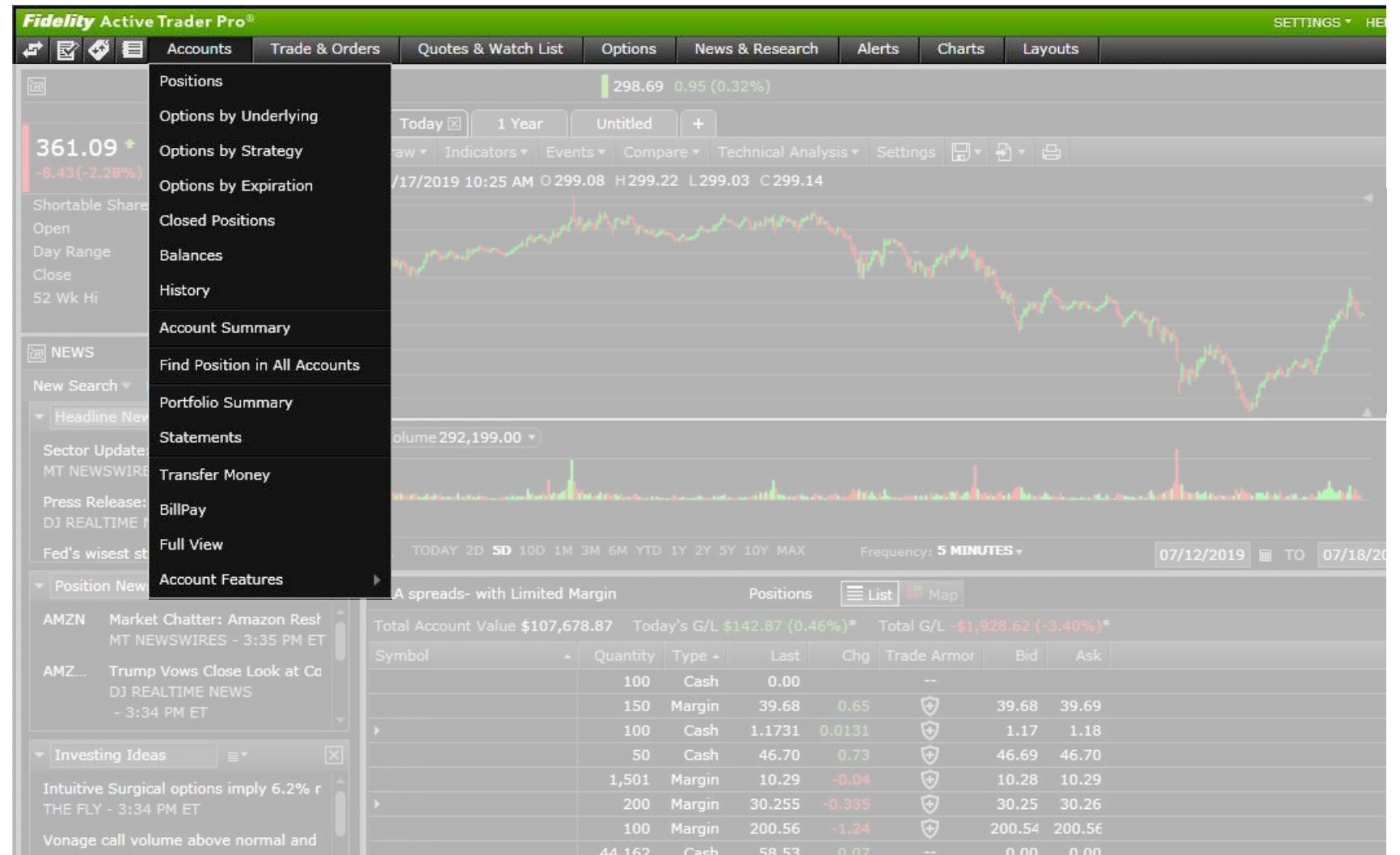
## Accounts Tab

Holds all of the account-specific tools you'll need

## Positions

## Balances

## Account Summary



# Accounts



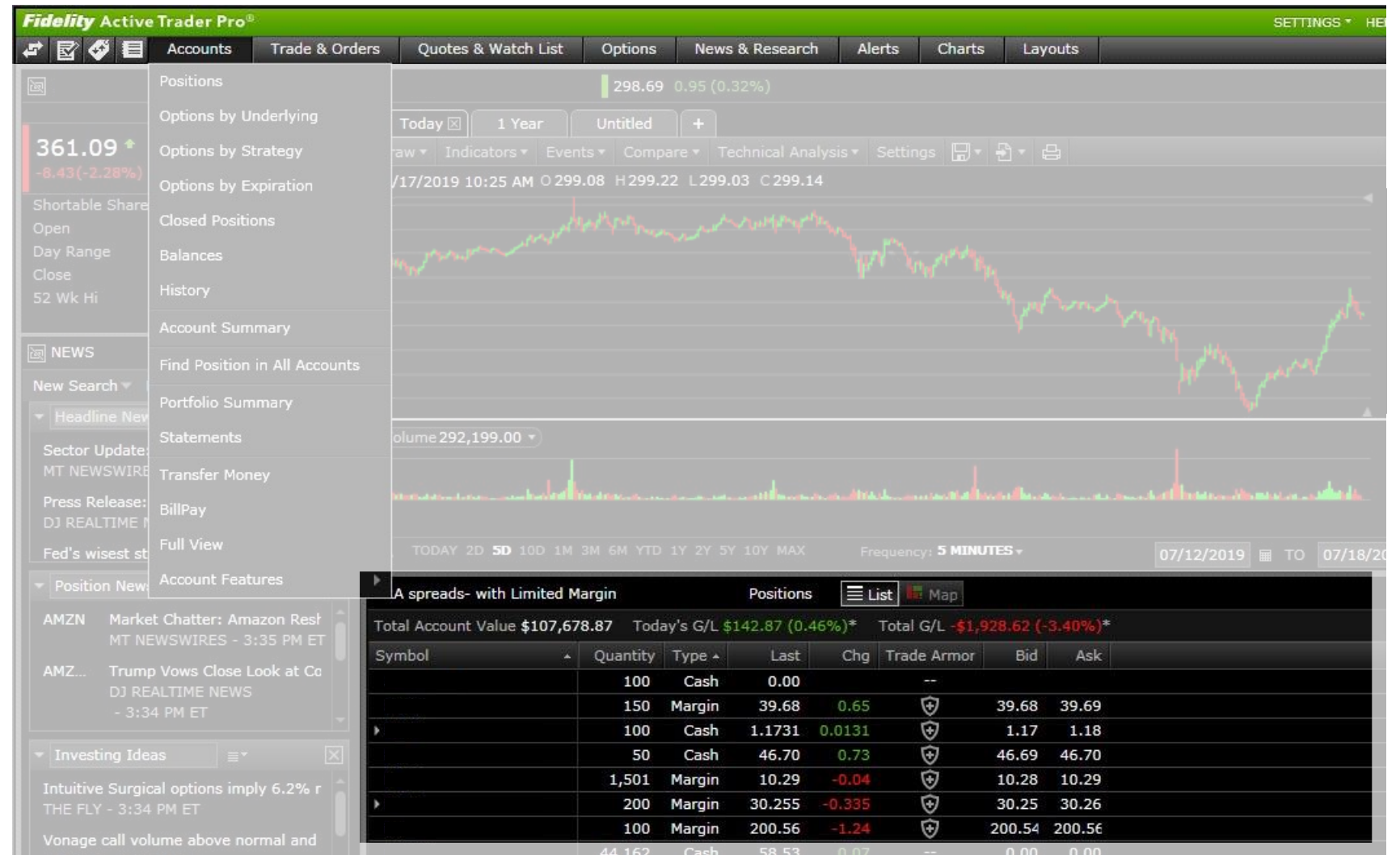
## Accounts Tab

## Positions

Gives you the power to customize your view with selected data fields and displays

## Balances

## Account Summary



# Accounts



## Accounts Tab

## Positions

## Balances

Demonstrates total account value, cash available to trade, and intra-day buying power

## Account Summary

Fidelity Active Trader Pro®

Accounts

Trade & Orders

Quotes & Watch List

Options

News & Research

Alerts

Charts

Layouts

349.68 ▲

-11.75(-3.25%)

B 349.59 × 1

A 349.70 × 1

V 5,446,480

Shortable Shares

Show

Open

356.18

Day Range

345.71 - 357.69

Close

361.43 (07/24/2019)

52 Wk Hi

446.01 (03/01/2019)

ACCOUNT SUMMARY

IRA spreads- with Limited Margin

Today's Net Change

-\$2,494

GAIN/LOSS

REALIZED

UNREALIZED

Since Close

\$0

-\$2,494\*

Since Purchase

\$0

\$1,833\*

YTD

-\$2,538

--

Total Account Value

\$108,587.60

Cash Available to Trade

\$8,483.43

Cash (core)

\$7,277.46

Open Positions

19

Open Orders

0

Today's Trades

0

PRICE IMPROVEMENT

ORDERS

TOTAL

Month-to-Date

0

\$0.00

Year-to-Date

32

\$5,536.34

Previous 12 Months

49

\$5,949.05

View Details

Level 1- Margin

Balances

As of 07/25/2019 11:20 AM ET

Current

Change

TOTAL ACCOUNT VALUE

\$115,542.28

-\$361.44

Account Equity Percentage

100.00%

Cash

Cash (core)

\$42,021.39

Cash Credit/Debit

\$0.00

\$0.00

Securities Held in Cash

-\$6.04

\$0.18

Margin

Margin Credit/Debit

\$0.00

\$0.00

Securities Held in Margin

\$73,581.37

-\$344.84

Margin Interest Rate

0.00%

Daily Margin Interest Accrued

\$0.00

Margin Interest Accrued (month to date)

\$0.00

Short

Short Debit

-\$27.33

\$0.00

Level 5- Margin- Option Trading Account

Positions

List

Map

Total Account Value \$3,232,082.41 Today's G/L -\$101.92 (0.00%)\* Total G/L \$368,854.34 (19.69%)\*

Symbol

Last

Chg

% Chg

Bid

Ask

Volume

Real-time Analytics

Trade Armor

Notebook

1.00

--

--

--

--

--

--

--

+

▶

11.73

0.14

1.21

11.73

11.74

8,306,288

--

+

+

▶

4.02

-0.06

-1.47

4.01

4.02

82,285

--

+

+

100.047

--

--

--

--

--

--

--

+

53.185

-0.595

-1.11

53.18

53.19

5,560,462

--

+

+

0.00

--

--

--

--

--

--

--

+

100.659

--

--

--

--

--

--

--

+

£1.00

--

--

£1.00

£1.0001

--

--

--

+



# Accounts



Accounts Tab

Positions

Balances

## Account Summary

Offers a streamlined view of profit and loss information, key balance, and order information

Fidelity Active Trader Pro®

Accounts

Trade & Orders

Quotes & Watch List

Options

News & Research

Alerts

Charts

Layouts

349.68▲

-11.75(-3.25%)

B 349.59 × 1

A 349.70 × 1

V 5,446,480

Shortable Shares

Show

Open

356.18

Day Range

345.71 - 357.69

Close

361.43 (07/24/2019)

52 Wk Hi

446.01 (03/01/2019)

ACCOUNT SUMMARY

IRA spreads- with Limited Margin

Today's Net Change - \$2,494

GAIN/LOSS

REALIZED

UNREALIZED

Since Close

\$0

-\$2,494\*

Since Purchase

\$0

\$1,833\*

YTD

-\$2,538

--

Total Account Value

\$108,587.60

Cash Available to Trade

\$8,483.43

Cash (core)

\$7,277.46

Open Positions

19

Open Orders

0

Today's Trades

0

PRICE IMPROVEMENT

ORDERS

TOTAL

Month-to-Date

0

\$0.00

Year-to-Date

32

\$5,536.34

Previous 12 Months

49

\$5,949.05

Level 1- Margin

Balances

As of 07/25/2019 11:20 AM ET

Current

Change

▼ TOTAL ACCOUNT VALUE

\$115,542.28

-\$361.44

Account Equity Percentage

100.00%

Cash

Cash (core)

\$42,021.39

Cash Credit/Debit

\$0.00

\$0.00

Securities Held in Cash

-\$6.04

\$0.18

Margin

Margin Credit/Debit

\$0.00

\$0.00

Securities Held in Margin

\$73,581.37

-\$344.84

Margin Interest Rate

0.00%

Daily Margin Interest Accrued

\$0.00

Margin Interest Accrued (month to date)

\$0.00

Short

Short Debit

-\$27.33

\$0.00

Level 5- Margin- Option Trading Account

Positions

List

Map

Total Account Value \$3,232,082.41

Today's G/L -\$101.92 (0.00%)\*

Total G/L \$368,854.34 (19.69%)\*

Symbol

Last

Chg

% Chg

Bid

Ask

Volume

Real-time Analytics

Trade Armor

Notebook

1.00

--

--

--

--

--

--

--

+

▶

11.73

0.14

1.21

11.73

11.74

8,306,288

--

+

+

▶

4.02

-0.06

-1.47

4.01

4.02

82,285

--

+

+

100.047

--

--

--

--

--

--

--

+

53.185

-0.595

-1.11

53.18

53.19

5,560,462

--

+

+

0.00

--

--

--

--

--

--

--

+

100.659

--

--

--

--

--

--

--

+

£1.00

--

--

£1.00

£1.0001

--

--

--

+



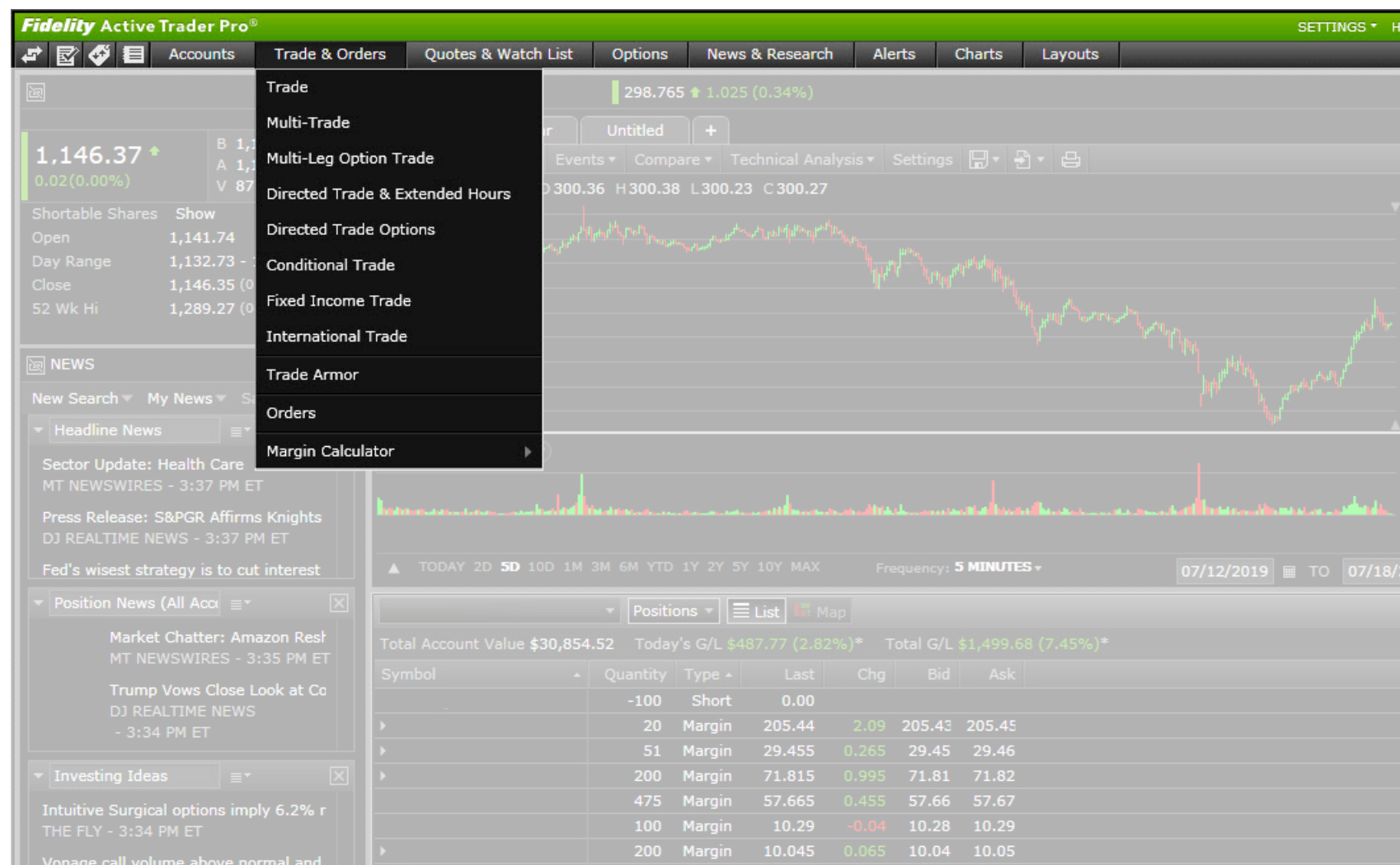
# Trades & Orders

## Trades & Orders Tab

Holds 5 trading tickets

## Standard Trade Ticket

## Trade Armor®



# Trades & Orders



## Trades & Orders Tab

### Standard Trade Ticket

Offers dynamic single trade tickets that prefill information with a single click

### Trade Armor®

The screenshot displays the Fidelity ATP trading interface. The top navigation bar includes tabs for List, Options, News & Research, Alerts, Charts, and Layouts. The main area shows account balances and a table of positions. A right-hand sidebar displays a 'TRADE' ticket with the following details:

- Level 2- has 81- Margin
- Margin Buying Power: \$130,575.30
- Intraday Buying Power: \$77,335.03
- Symbol: [Dropdown]
- Action: Buy
- Quantity: 10
- Order Type: Market
- TIF: Day
- Type: Margin
- Buttons: Preview, Clear All
- Price: 10.515 (down arrow)
- Change: -0.165 (-1.54%)
- Order Details: B 10.51 x 437, A 10.52 x 110, V 21,290,338

Below the trade ticket is a 'FILTERS' section with tabs for Markets and Technicals. The bottom of the screen shows a table of market data with columns for Last, Chg, % Chg, Bid, Ask, Volume, Real-time Analytics, Trade Armor, Notebook, and News.

Last	Chg	% Chg	Bid	Ask	Volume	Real-time Analytics	Trade Armor	Notebook	News
1.00	--	--	--	--	--	--	--	+	--
11.7208	0.1308	1.13	11.72	11.73	8,350,989	--	+	+	--
4.02	-0.06	-1.47	4.01	4.02	82,285	--	+	+	--
100.047	--	--	--	--	--	--	--	+	--
53.235	-0.545	-1.01	53.23	53.24	5,622,653	--	+	+	--
0.00	--	--	--	--	--	--	--	+	--
100.659	--	--	--	--	--	--	--	+	--
£1.00	--	--	£1.00	£1.0001	--	--	--	+	--

# Trades & Orders

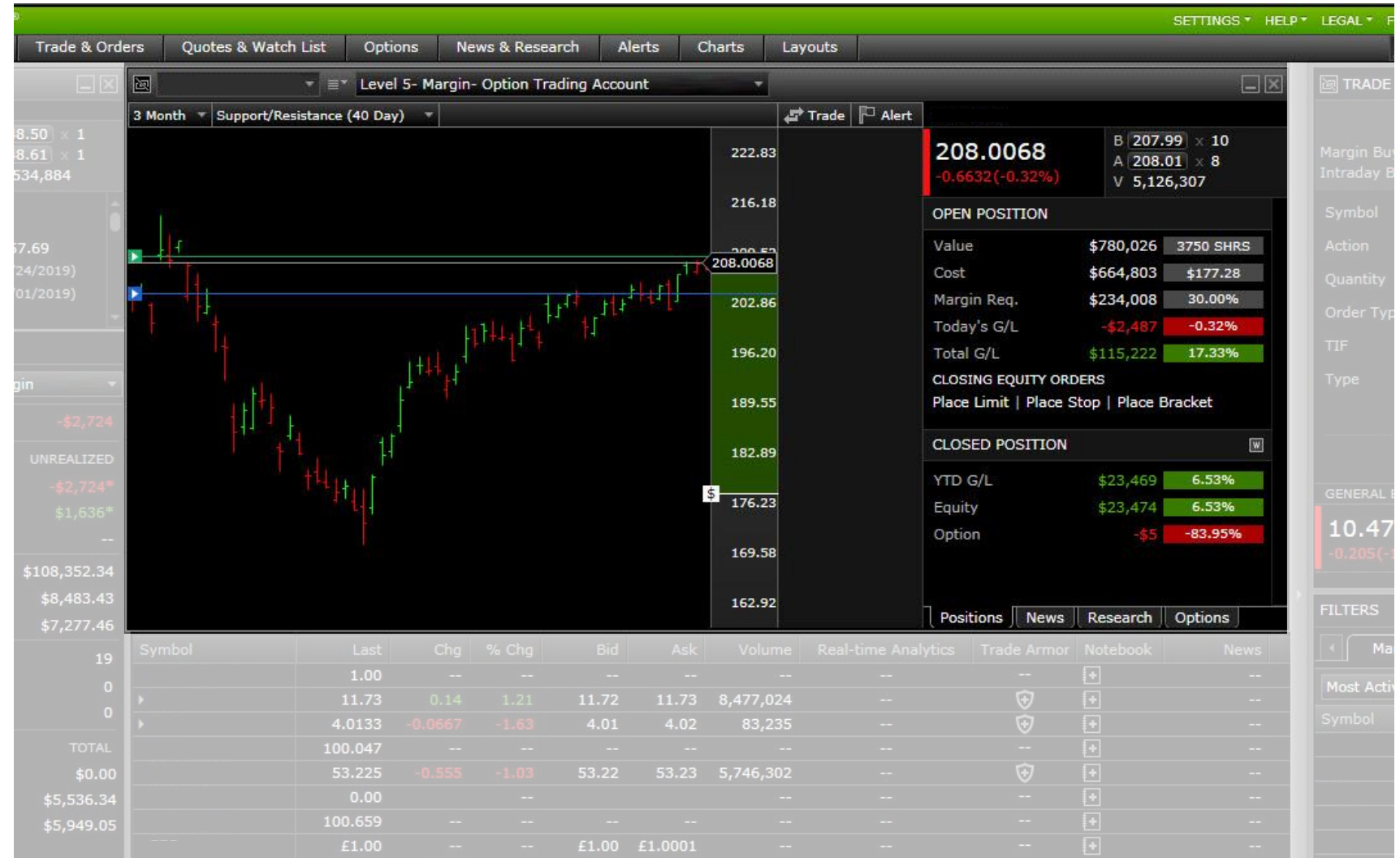


## Trades & Orders Tab

## Standard Trade Ticket

## Trade Armor®

- Condenses all of the info you need in a single location
- Provides access to tools that help you explore and efficiently execute risk management strategies



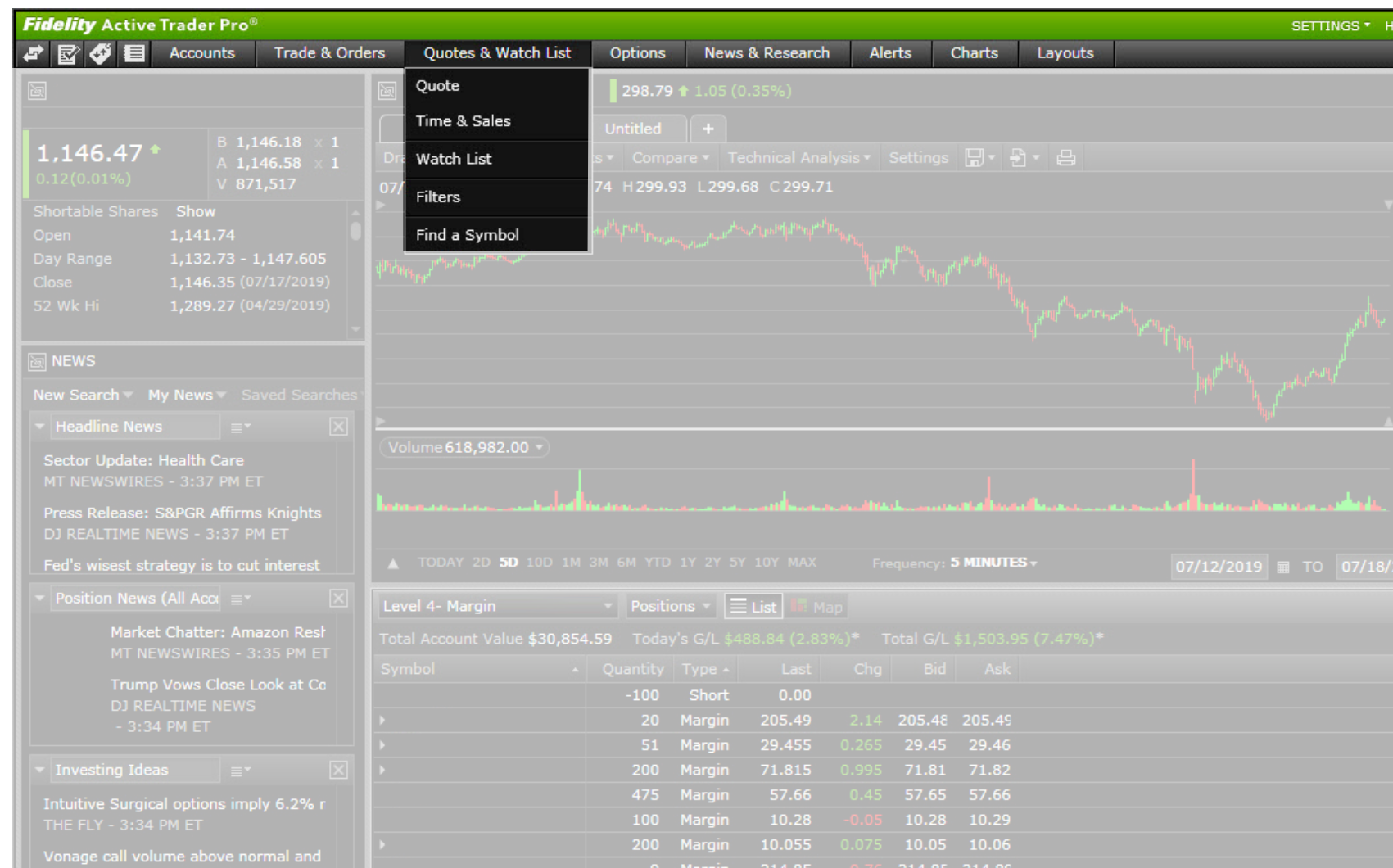
# Quotes & Watch List

## Quotes & Watch List Tab

Holds market data tools, including: Quote Time & Sales, Watch List, and Filters

## Watch Lists

## Quote windows





# Quotes & Watch List

## Quotes & Watch List Tab

## Watch Lists

Streams updates in real time for the companies and indices you follow

## Quote Filters





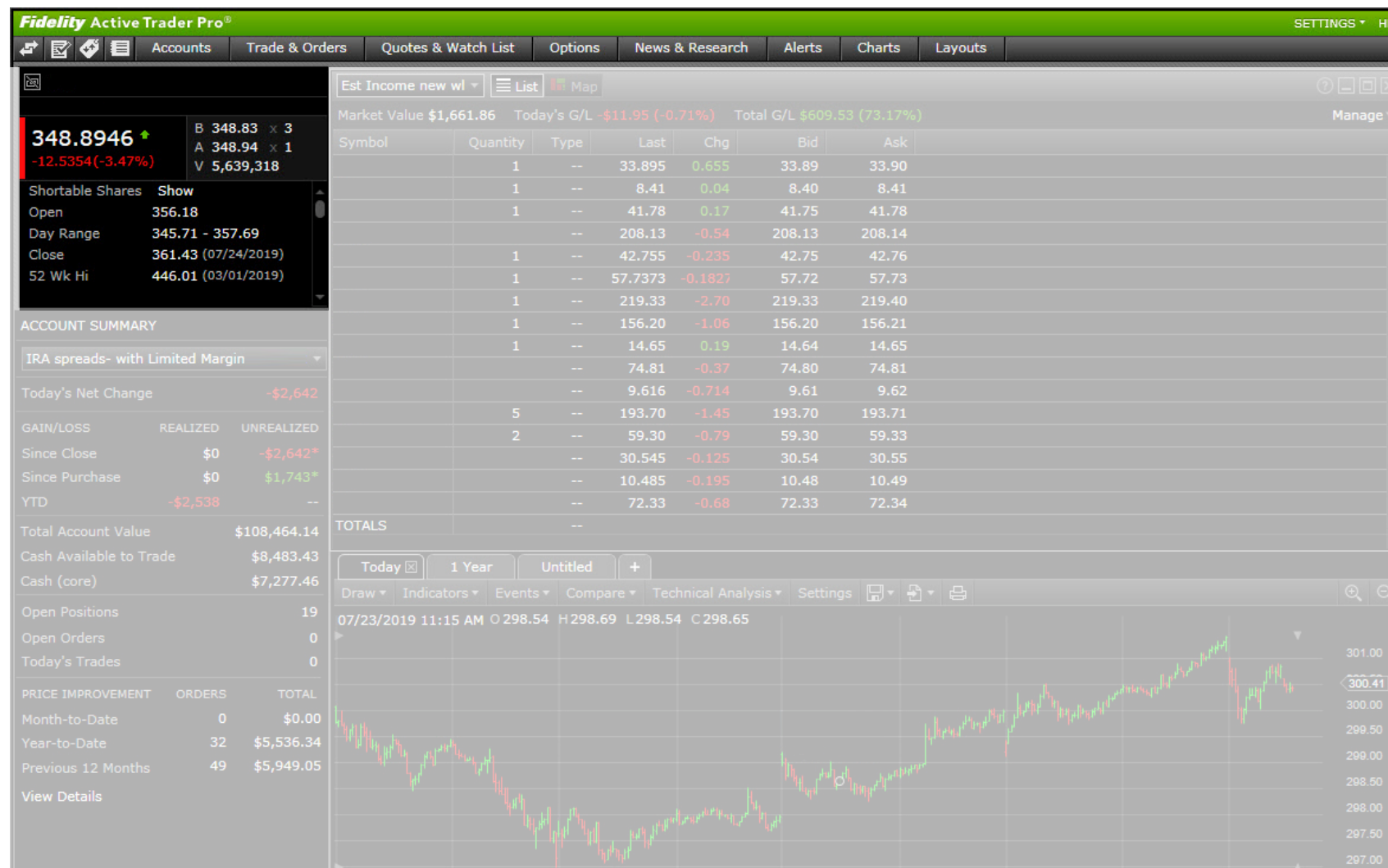
# Quotes & Watch List

Quotes &  
Watch List Tab

Watch Lists

Quote Filters

Helps you stay up to speed with the biggest gainers, biggest losers, and most actives in the market



# Options

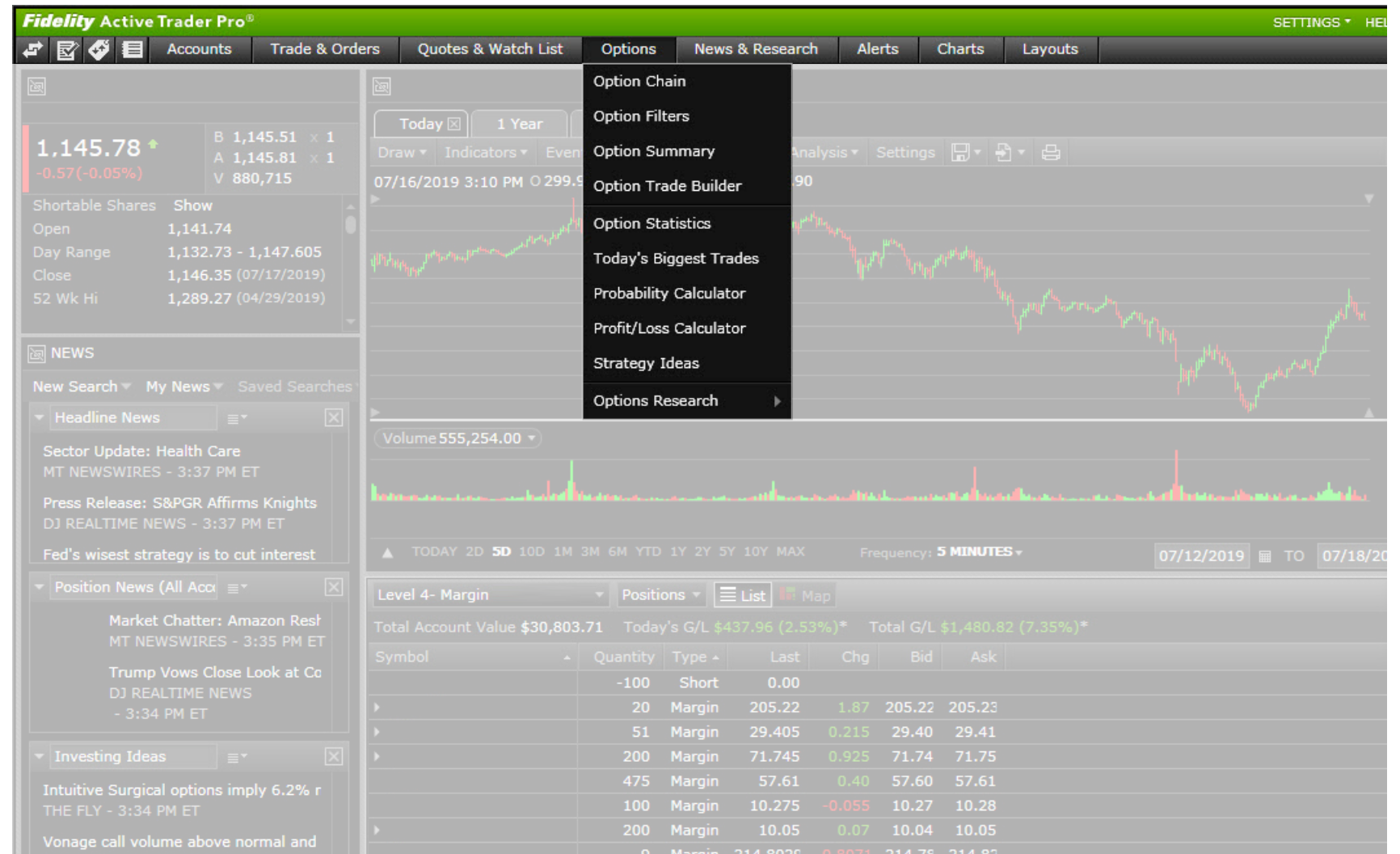


## Options Tab

Provides access to in-depth, high-quality option market analytics, along with tools to help generate and validate trading ideas

## Option Chain

## Option Filters



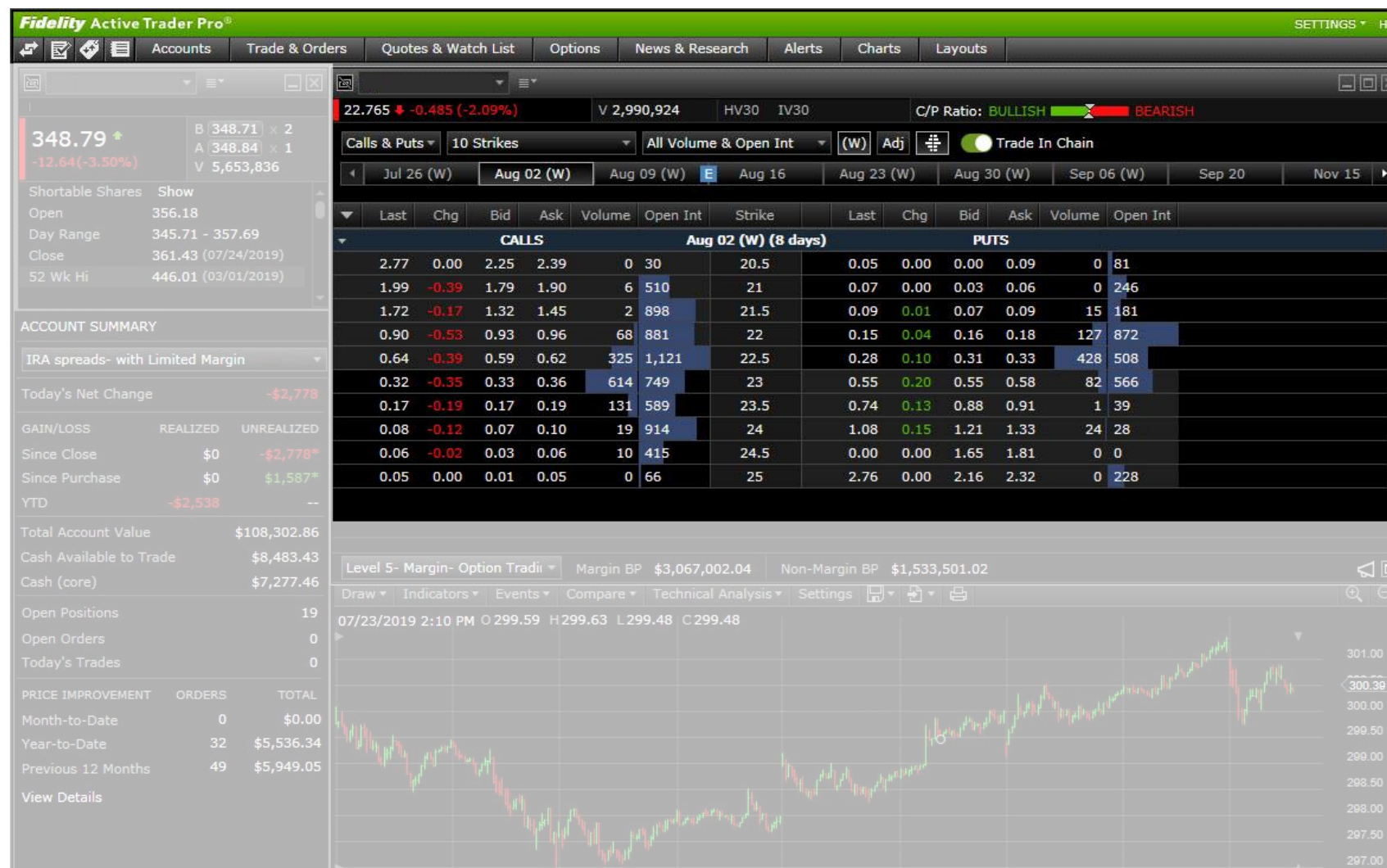
# Options

## Options Tab

## Option Chain

Provides a list of the option contracts available for a given security, listed by expiration

## Option Filters



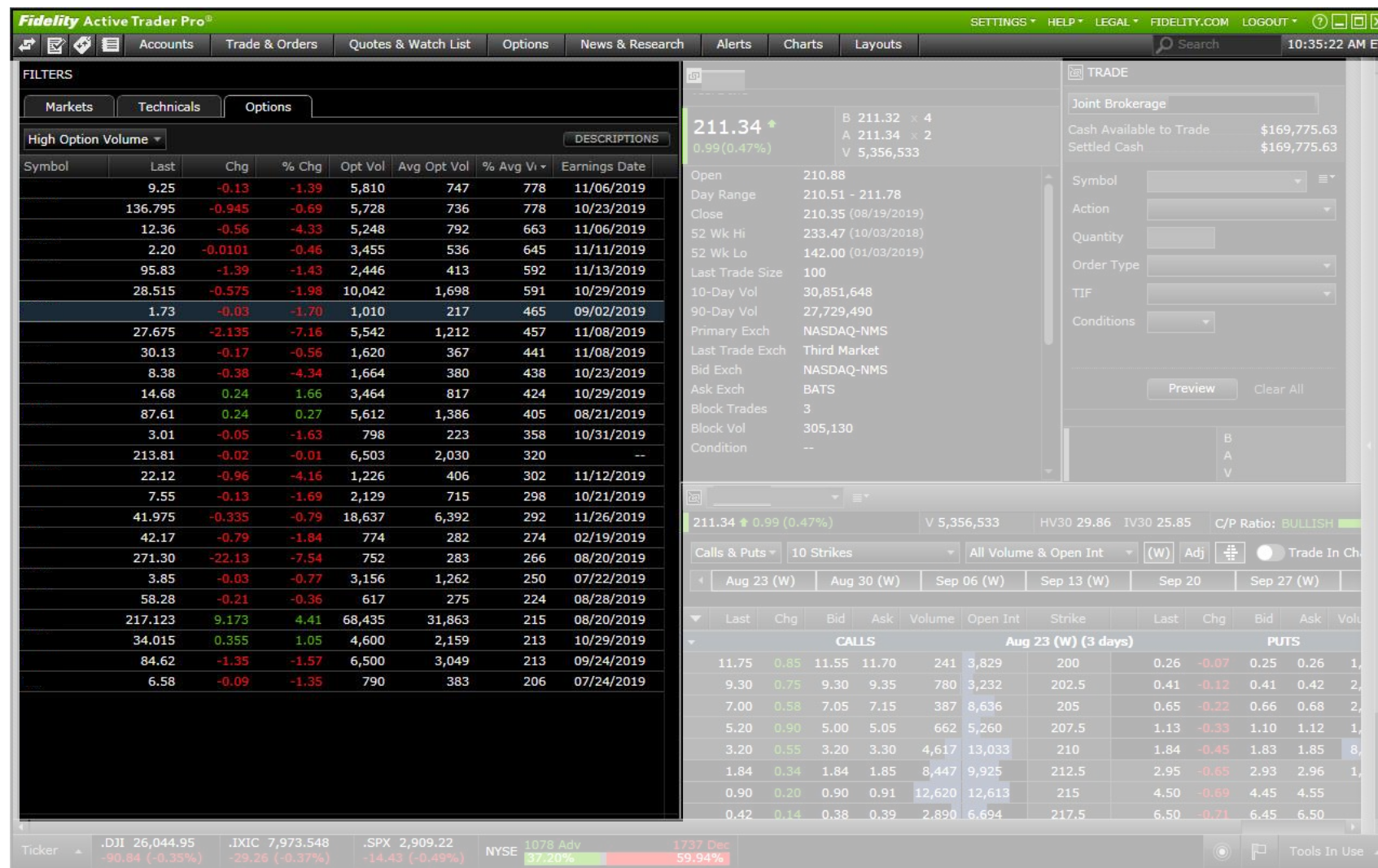
# Options



## Options Tab Option Chain

### Filters

Allows you to filter for underlying securities with unusual volume and implied volatility moves





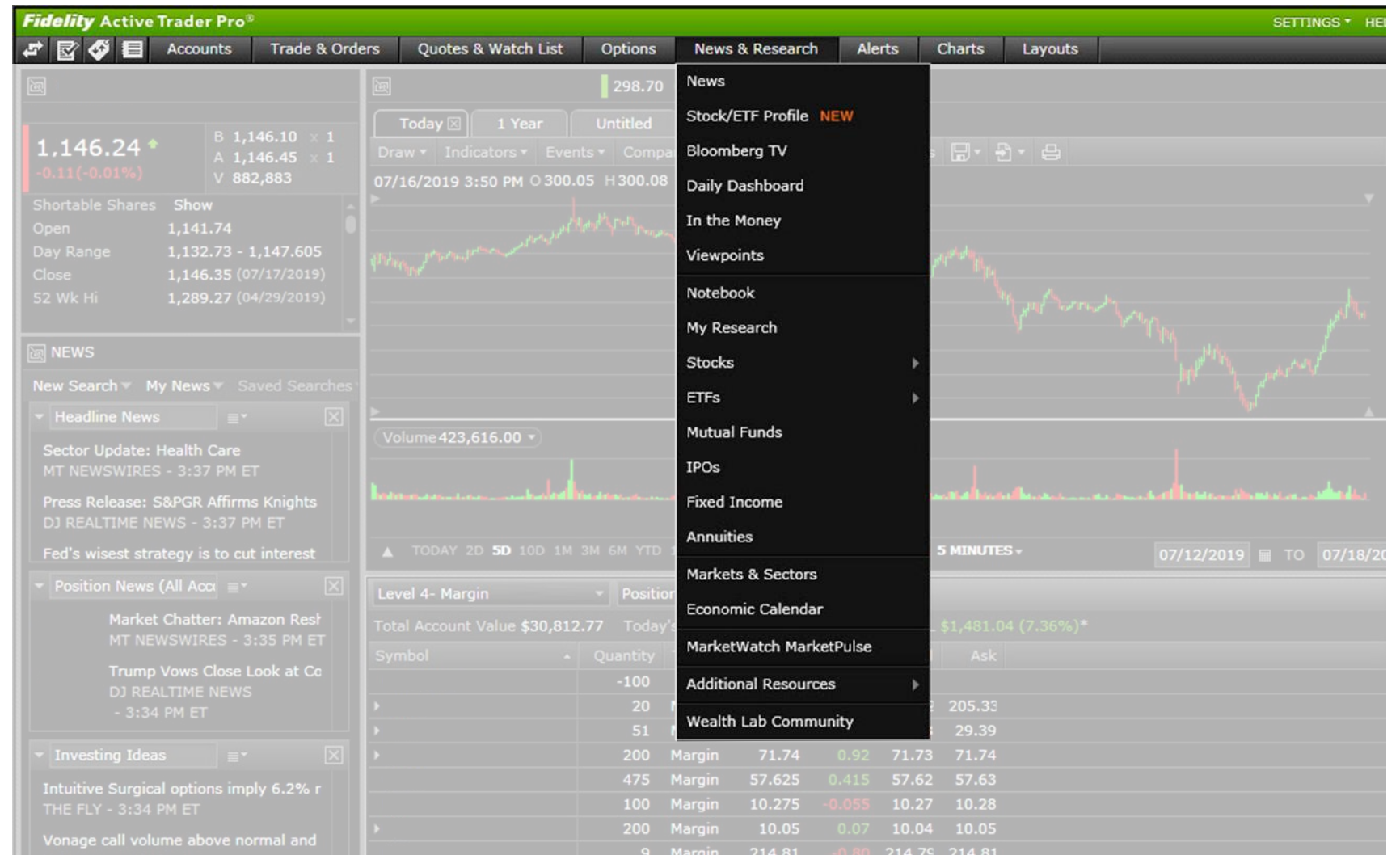
# News & Research



## News & Research Tab

Contains all information available on ATP and Fidelity.com

## Daily Dashboard





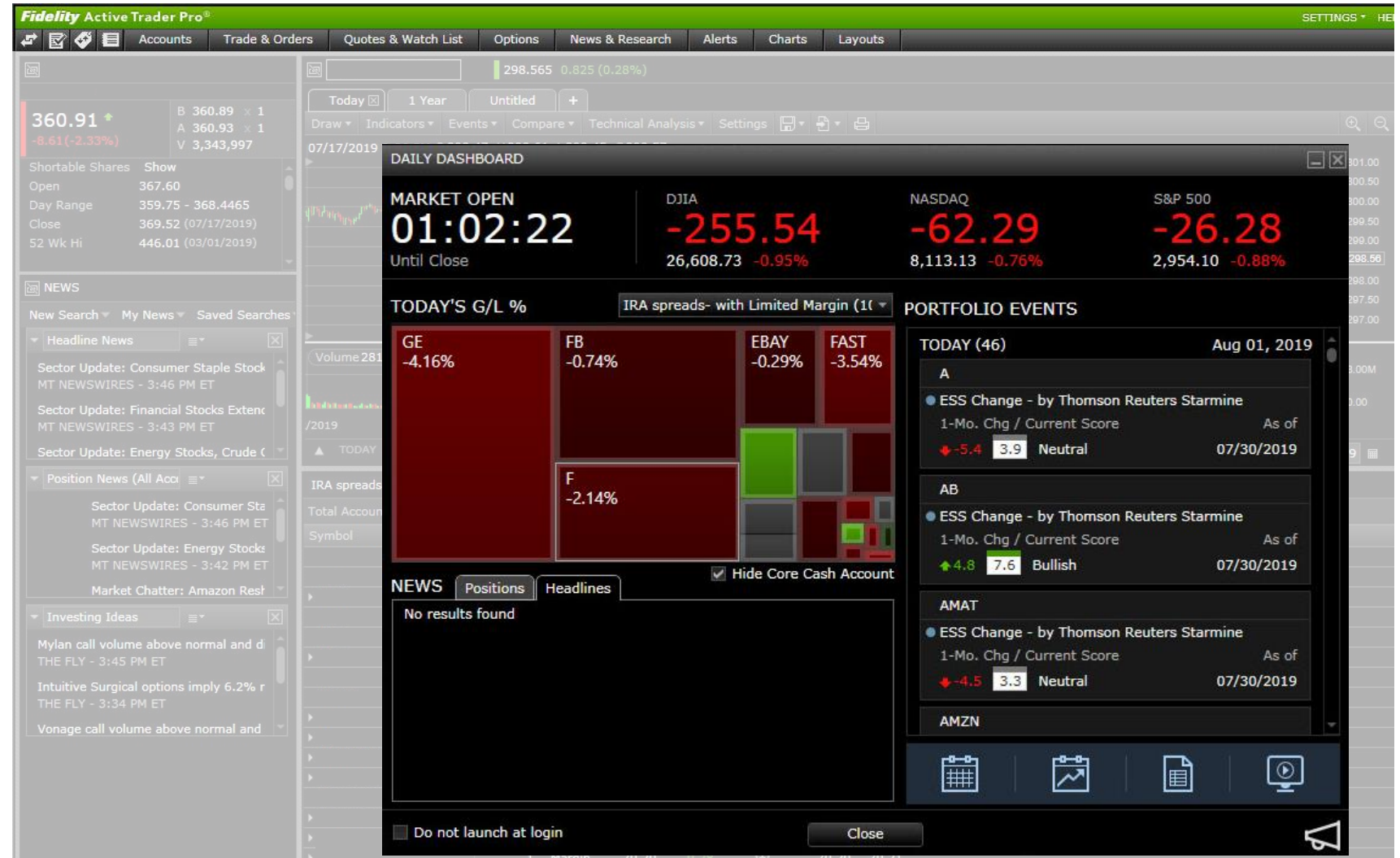
# News & Research



## News & Research Tab

### Daily Dashboard

Presents an easy-to-read snapshot of market and account events along with relevant news updates that can help jump-start your trading day



# Alerts



## Alerts Tab

Helps you stay on top  
of the market and accounts

## Price Alerts

## Real-time Analytics



# Alerts

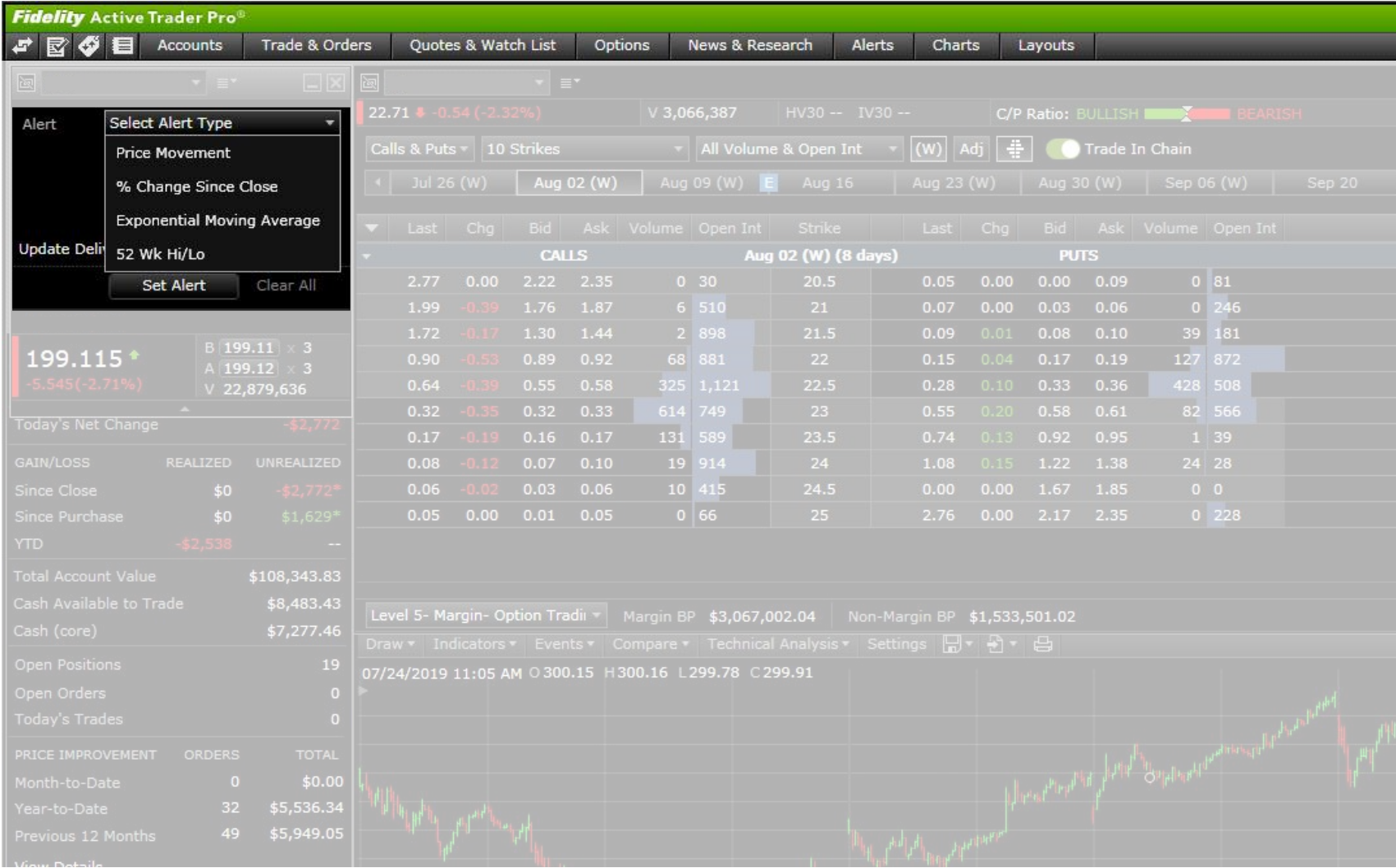


## Alerts Tab

## Set Price Alerts

Alerts you when the stocks you follow hit price triggers that you set

## Real-time Analytics



# Alerts

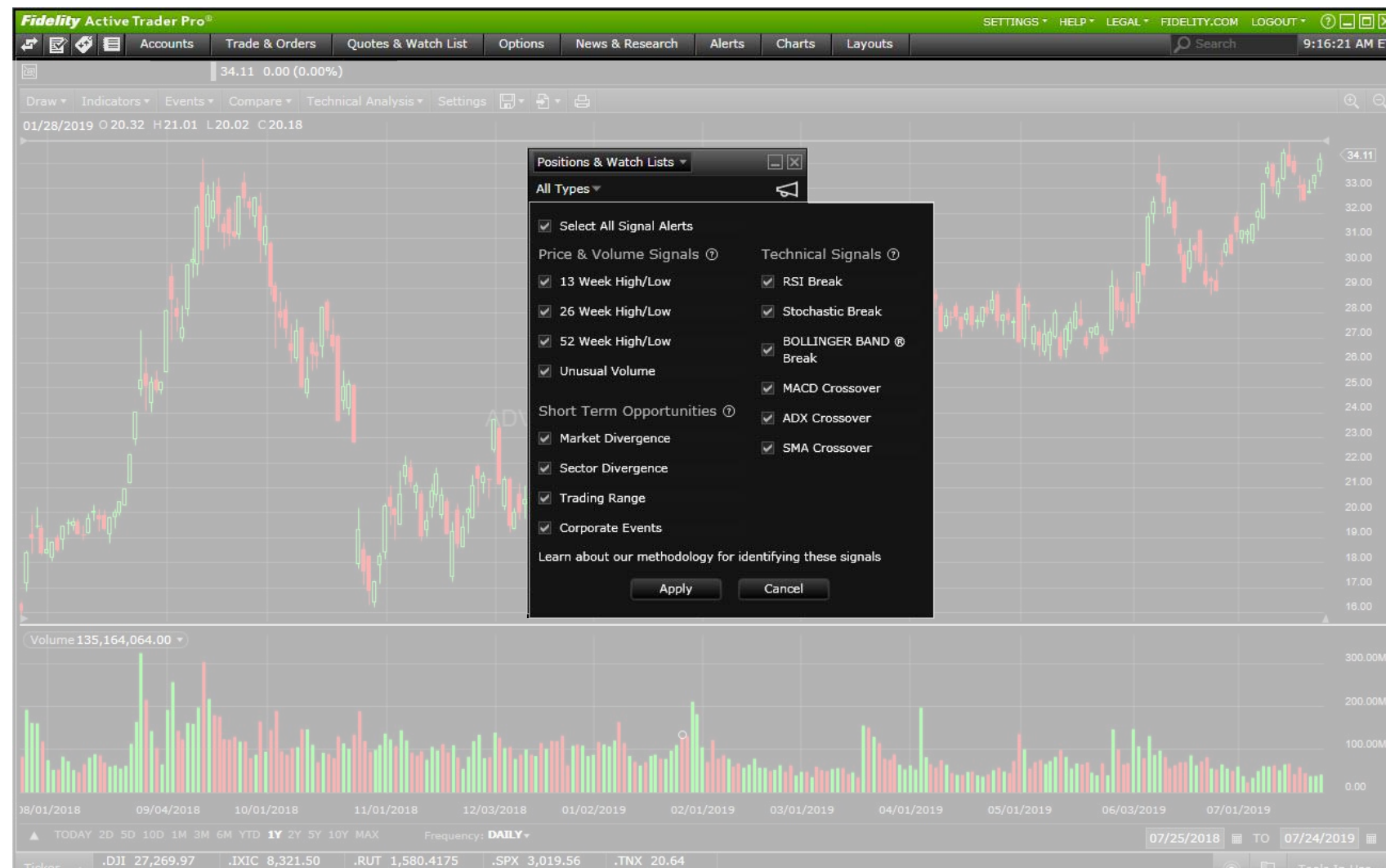


## Alerts Tab

## Set Price Alerts

## Real-time Analytics

Uses the signal alerts from Real-time Analytics to help manage your positions and open orders, and generate trading opportunities





# Charts



## Charts Tab

Access the chart and all of its features

Draw

Indicators

Events

Technical Analysis

Chart Settings





# Charts



## Charts Tab

### Draw

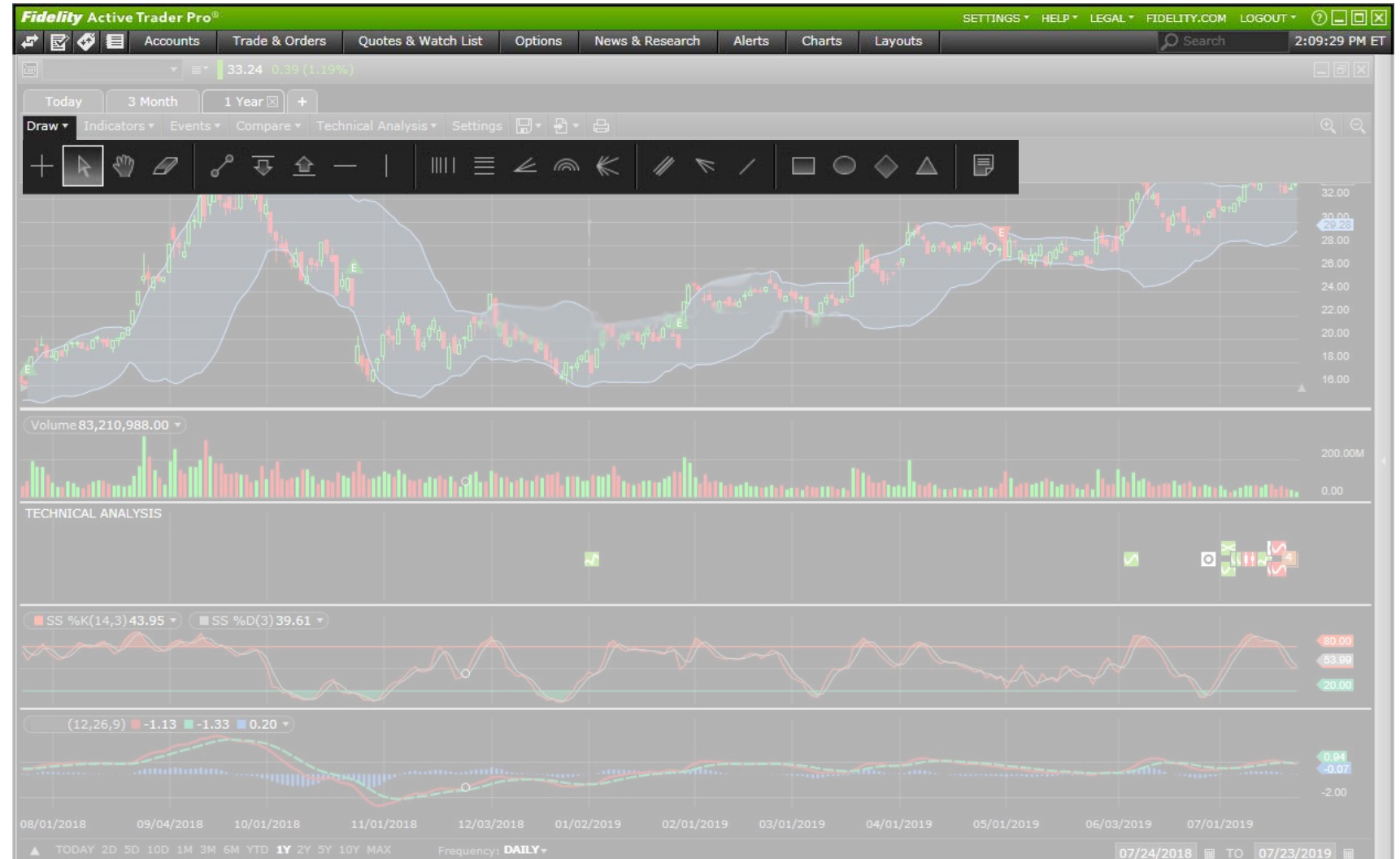
Utilize a range of drawing tools to find support and resistance

### Indicators

### Events

### Technical Analysis

### Chart Settings



# Charts



Charts Tab

Draw

Indicators

Add indicators to better  
time your entries and exits

Events

Technical Analysis

Chart Settings



# Charts

Charts Tab

Draw

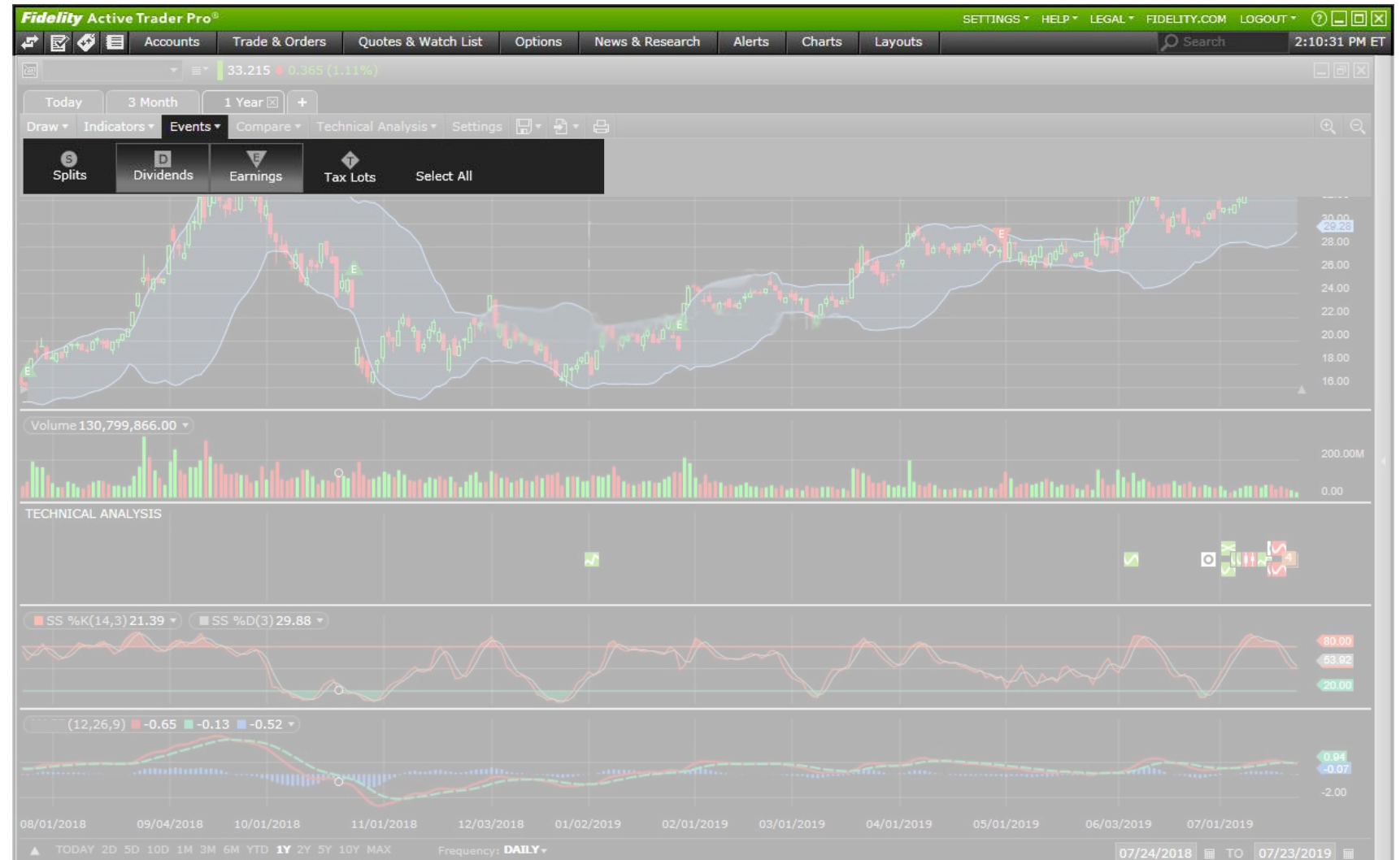
Indicators

Events

View past historical and technical events

Technical Analysis

Chart Settings



# Charts

Charts Tab

Draw

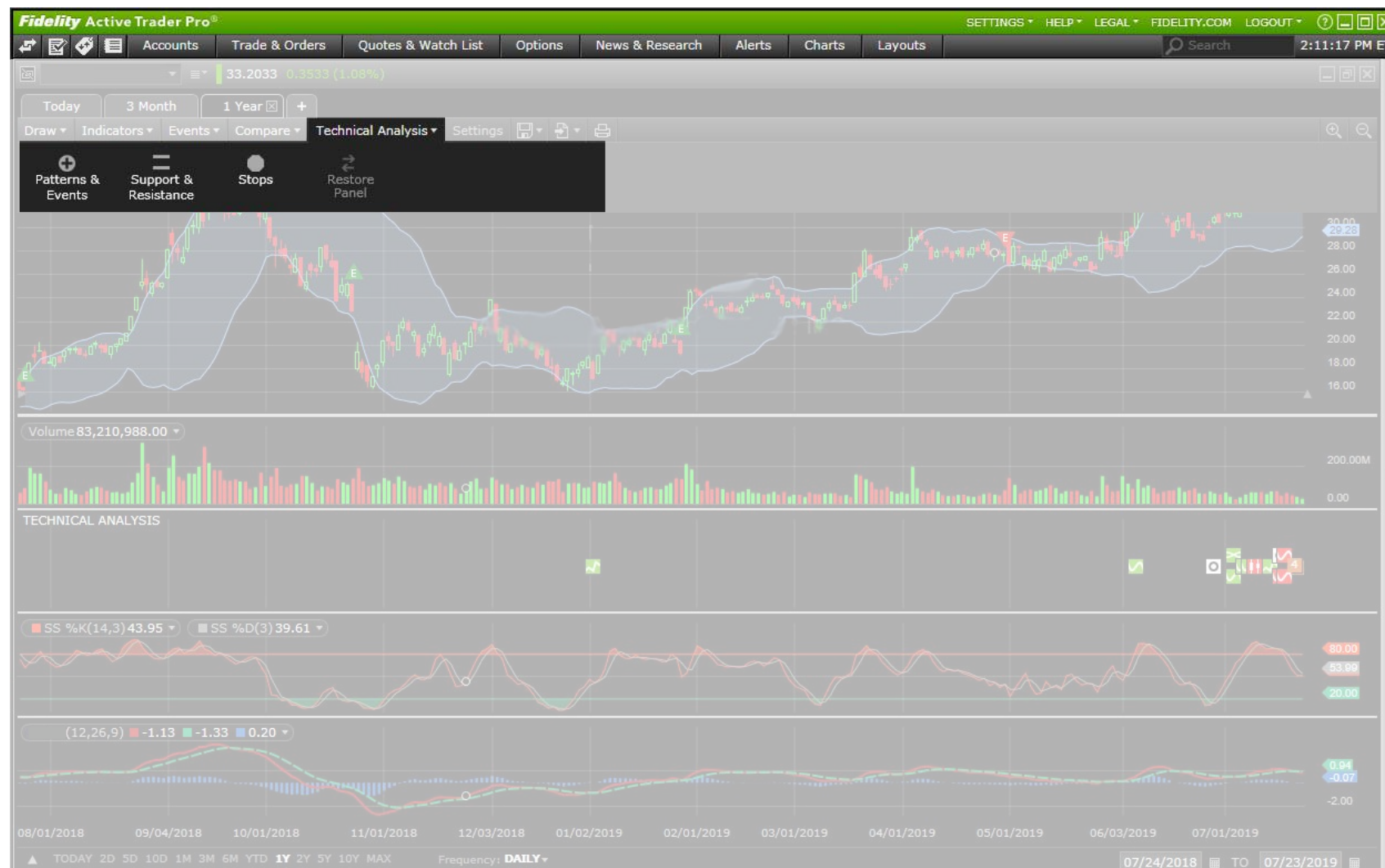
Indicators

Events

Technical Analysis

View anticipated and confirmed technical events and patterns with analysis powered by Recognia

Chart Settings





# Charts

Charts Tab

Draw

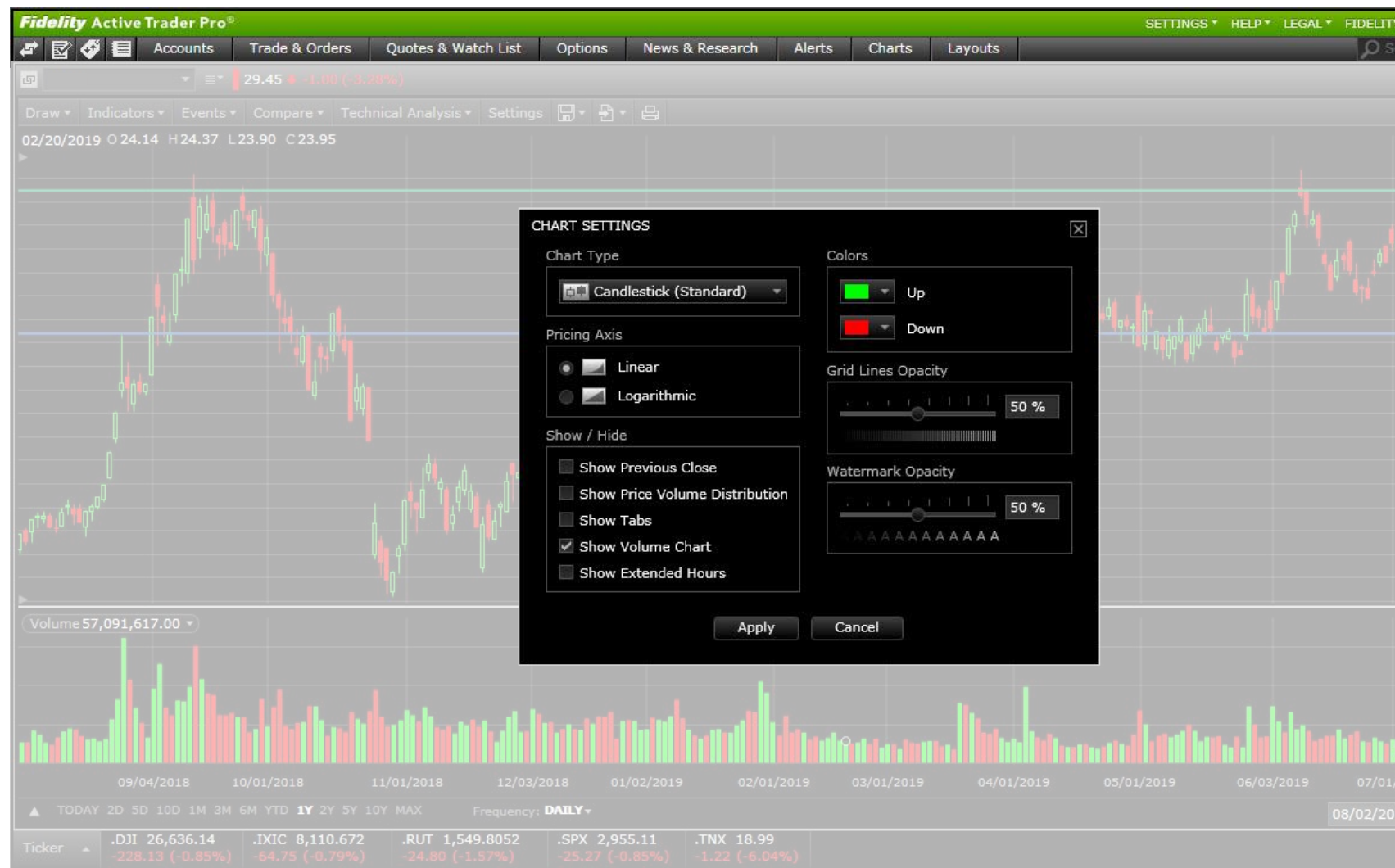
Indicators

Events

Technical Analysis

Chart Settings

Customize chart setting  
to meet your needs





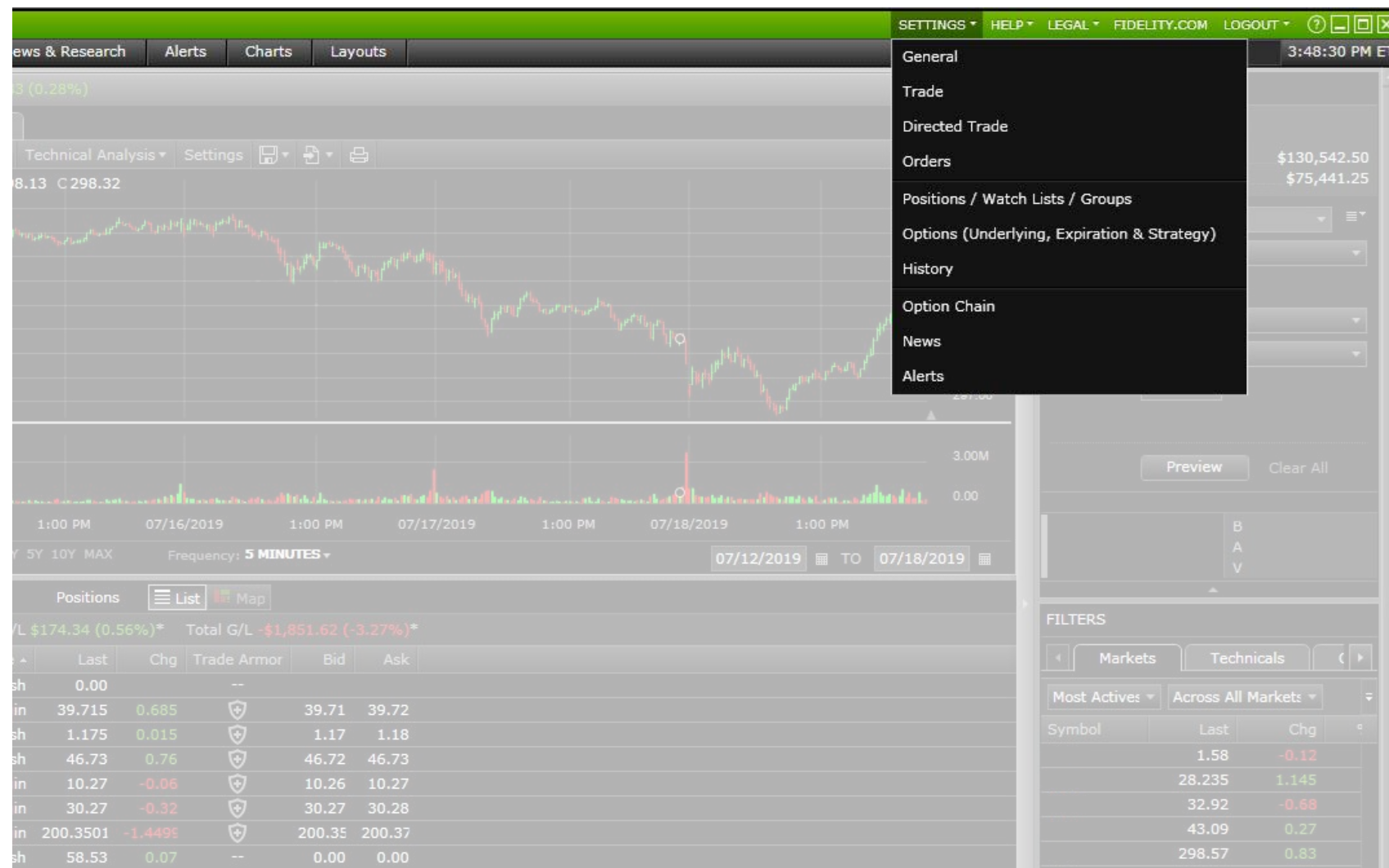
# Customize your ATP Experience

# Personalize your Settings

## Settings Tab

Personalize your ATP layout and update systems settings like default accounts, display (color scheme, zoom), and trading preferences

## Settings Window



# Personalize your Settings

Settings Tab

Settings Window

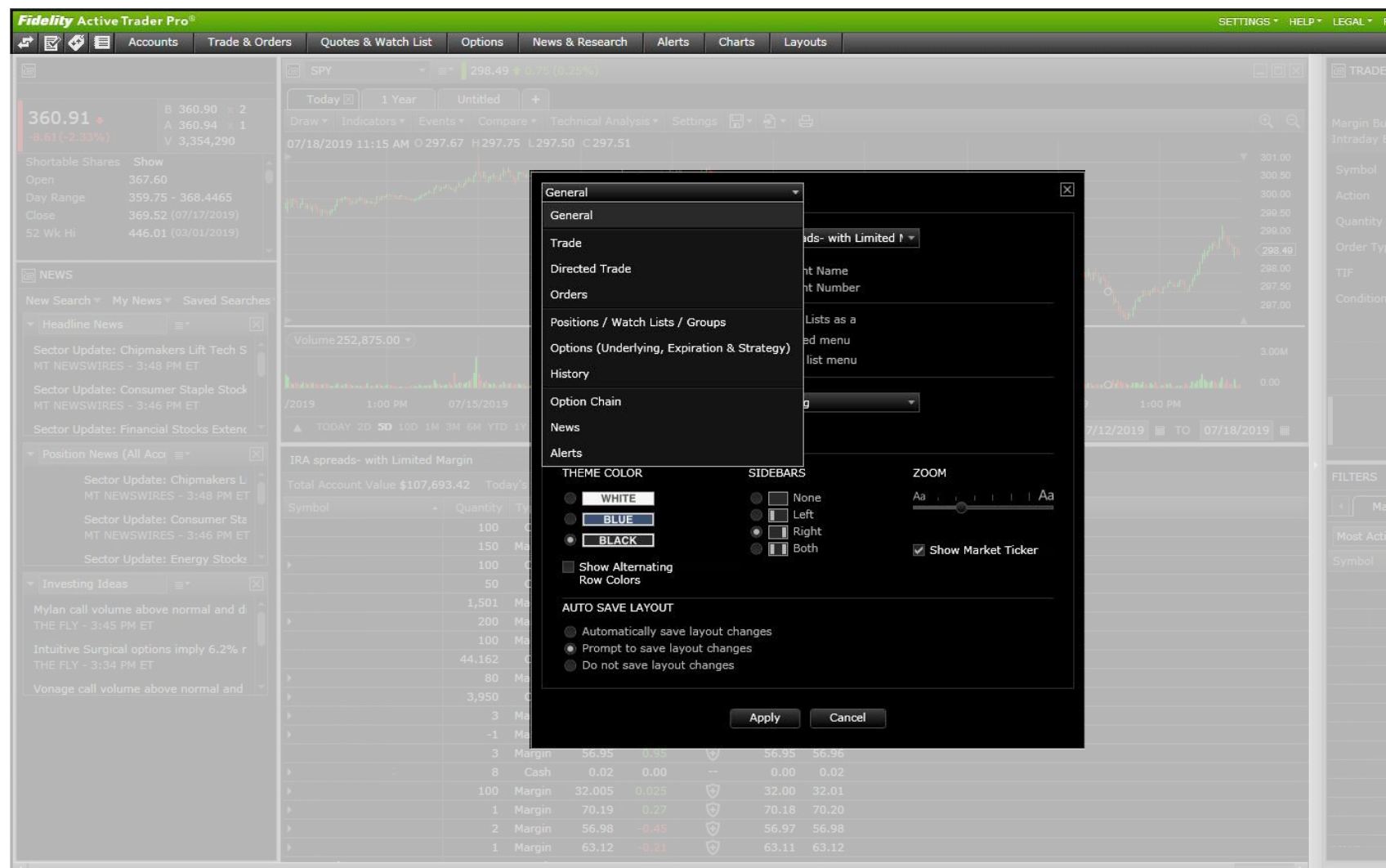
General

Trade

Directed Trade

Orders

Positions / Watch Lists /  
Groups





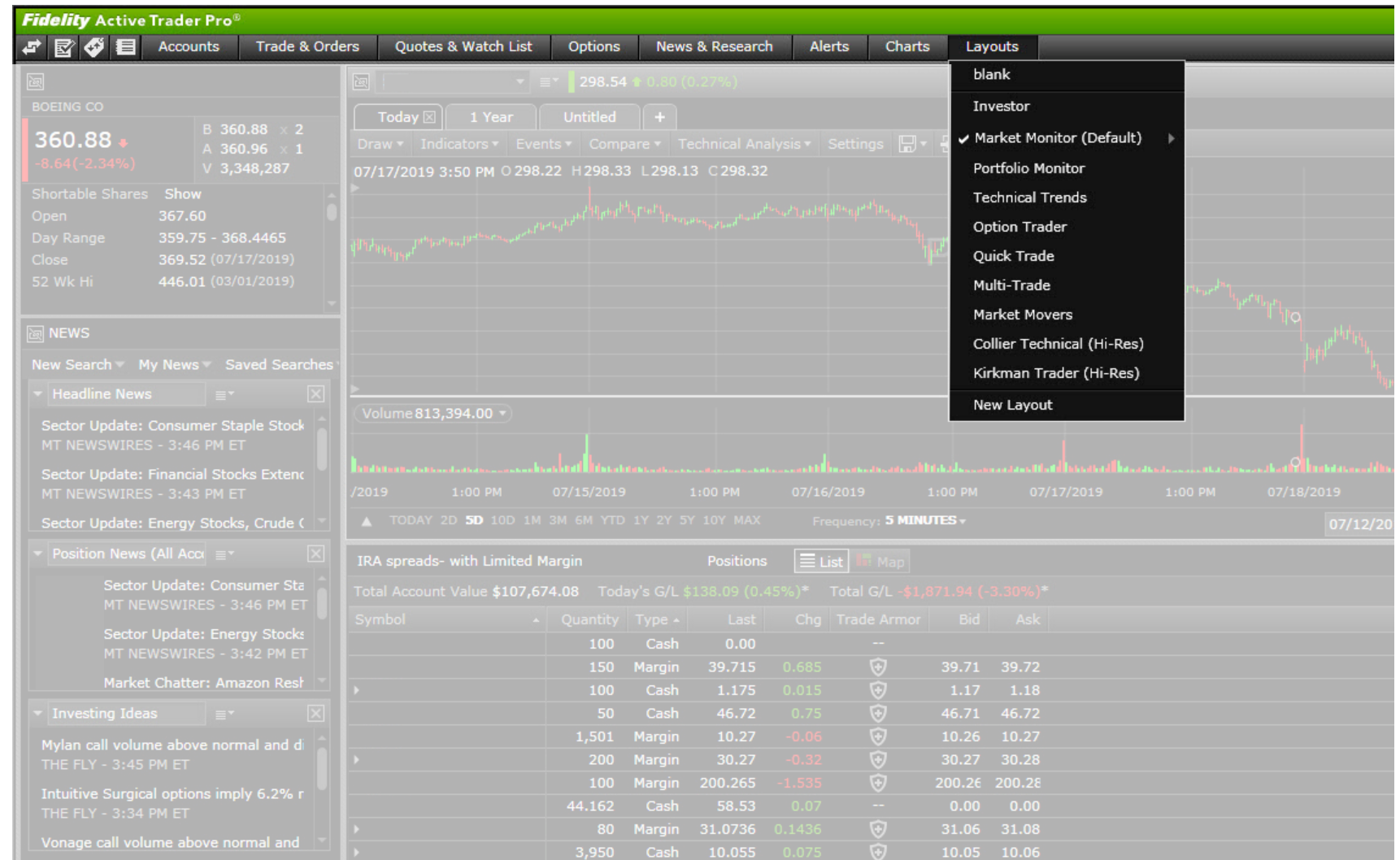
# Customize Your Layout



## Layouts Tab

Leverage a predefined layout, customize a predefined layout, or create a new layout

## Link Tool



# Customize Your Layout



## Layouts Tab

## Link Tool

Allow data in one tool to automatically update the other

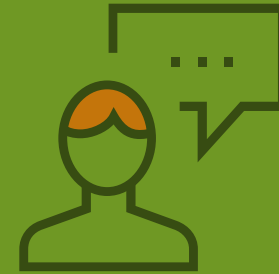
The screenshot displays the Fidelity Active Trader Pro interface. At the top, a green navigation bar includes tabs for Accounts, Trade & Orders, Quotes & Watch List, Options, News & Research, Alerts, Charts, and Layouts. The main area shows a table of positions with columns for Symbol, Quantity, Type, Last, Chg, Trade Armor, Bid, and Ask. A context menu is open over the SPY position, offering options to link the data to various toolsets: No Link, Link to Gray Tools (Default), Link to Blue Tools, Link to Orange Tools, Link to Purple Tools, and Link to Yellow Tools. To the right, an ACCOUNT SUMMARY panel shows details for the IRA spreads- with Limited Margin, including Today's Net Change, GAIN/LOSS, and Total Account Value. A NEWS panel on the far right shows no results for the selected search.

Symbol	Quantity	Type	Last	Chg	Trade Armor	Bid	Ask
	100	Cash	0.00		--		
	10	Margin	65.90	0.72		65.90	65.91
	150	Margin	39.47	0.66		39.47	39.48
	100	Cash	0.9099	0.0111		0.9006	0.9099
	50	Cash	42.73	0.59		42.72	42.73
	1,501	Margin	9.425	0.195		9.42	9.43
	200	Margin	29.10	0.54		29.10	29.11
	44.162	Cash	58.32	-0.14		0.00	0.00
	80	Margin	29.24	0.24		29.22	29.28

ACCOUNT SUMMARY		
IRA spreads- with Limited Margin		
Today's Net Change \$214		
GAIN/LOSS	REALIZED	UNREALIZED
Since Close	-\$4	\$218*
Since Purchase	\$2	-\$2,493*
YTD	-\$876	--
Total Account Value	\$103,212.08	
Cash Available to Trade	\$20,178.40	
Cash (core)	\$18,010.56	
Open Positions	20	
Open Orders	0	
Today's Trades	0	

PRICE IMPROVEMENT		
Month-to-Date	0	\$0.00
Year-to-Date	33	\$5,738.34

# Visit the Fidelity Learning Center



Learn more about putting ATP to work for you:

---

**Read Articles:** Learn more strategies and trading tips.

---

**Watch Videos:** Complete the *Making the Most of Active Trader Pro* course.

---

**Attend Seminars:** Attend monthly webinars on our website.



# Thank You



Please join us for our  
upcoming webinars.

---

**Download Active Trader Pro for free at**  
[Fidelity.com/ATP](https://Fidelity.com/ATP).


---

**Questions? Call a trading specialist at**  
800-564-0211.



# Disclosures



*Options trading entails significant risk and is not appropriate for all investors. Certain complex options strategies carry a dditional risk. Before trading options, please read [Characteristics and Risks of Standardized Options](#).  Supporting documentation for any claims, if applicable, will be furnished upon request.*

Real-time analytics uses historical information to generate alerts about potential opportunities. It should be used in conjunction with your own research and should not be the sole basis on which to make investment decisions. Past performance is no guarantee of future results.

Technical analysis focuses on market action — specifically, volume and price. Technical analysis is only one approach to analyzing stocks. When considering which stocks to buy or sell, you should use the approach that you're most comfortable with. As with all your investments, you must make your own determination as to whether an investment in any particular security or securities is right for you based on your investment objectives, risk tolerance, and financial situation. Past performance is no guarantee of future results.

Any screenshots, charts, or company trading symbols mentioned are provided for illustrative purposes only and should not be considered an offer to sell, a solicitation of an offer to buy, or a recommendation for the security.

*Investing involves risk, including risk of loss.*

2019 FMR LLC. All rights reserved.

Fidelity Brokerage Services, Member NYSE, SIPC, 900 Salem Street, Smithfield, RI 02917

