

Webinar Presentation  
**Introduction to  
Active Trader Pro®**



Presented by  
**Trading Strategy Desk®**

# Disclosures

- Options' trading entails significant risk and is not appropriate for all investors. Certain complex options strategies carry additional risk. Before trading options, please read [Characteristics and Risks of Standardized Options](#), and call 800-544- 5115 to be approved for options trading. Supporting documentation for any claims, if applicable, will be furnished upon request.
- News, commentary, and research reports are from third-party sources unaffiliated with Fidelity. Fidelity does not endorse or adopt their content. Fidelity makes no guarantees that the information supplied is accurate, complete, or timely, and does not provide any warranties regarding results obtained from its use.
- Examples in this presentation do not include transaction costs (commissions, margin interest, fees) or tax implications, but they should be considered prior to entering into any transactions.
- The information in this presentation, including examples using actual securities and price data, is strictly for illustrative and educational purposes only and is not to be construed as an endorsement, recommendation.



# Goal of this webinar:

To give traders an overview of the tools, features, and functionality of the Active Trader Pro® platform from Fidelity.

## What we will cover:

- How to access the Active Trader Pro® Platform
- Overview of the tools available in the platform
- How to setup and create a layout

# How to Download Active Trader Pro®

<https://www.fidelity.com/ATP>

**Fidelity** CUSTOMER SERVICE | PROFILE | OPEN AN ACCOUNT | REFER A FRIEND | LOG IN

Search or get a quote

Accounts & Trade | Planning & Advice | News & Research | Investment Products | Why Fidelity

Home » Investment Products » Trading » Advanced Trading Tools »

Trading Overview

WHAT WE OFFER

- The Fidelity Account

INVESTMENTS AND SERVICES

- Investment Choices
- Commissions, Margin Rates, and Fees

Online Trading

Mobile Trading

Commitment to Execution Quality

ADVANCED TRADING

- Trader Solutions
- Compare Service Levels

## Powerful technology for active investors

Make smarter trading decisions before, during, and after the trade with Active Trader Pro®. Get real-time insights, visual snapshots to monitor your investments, and powerful trading tools.

[Get Active Trader Pro®](#)

Call a specialist to advance your trading strategy at **800-564-0211**.

# Active Trader Pro®



# Settings


- **The settings tab is one of the primary tabs in Active Trader Pro®**
  - It is used for updating system settings such as:
    - Color Scheme
    - Default Accounts
    - Zoom
    - Trading
    - Display preferences




# Settings

**Fidelity Active Trader Pro®** SETTINGS ▾ HELP ▾ LEGAL ▾ FIDELITY.COM   

   Accounts Trade & Orders Quotes & Watch List Options News & Research Alerts Charts Layouts  11:02:12 AM ET

General 


Default Account 

Sort By

- ☒ Account Name
- ☐ Account Number

View Accounts, Account Groups, and Watch Lists as a

- ☐ Grouped menu
- ☒ Single list menu

Market Data Update Frequency 

THEME COLOR


- ☐ WHITE
- ☐ BLUE
- ☒ BLACK

☒ Show Alternating Row Colors

SIDEBARS

- ☒ None
- ☐ Left
- ☐ Right
- ☐ Both

ZOOM


Aa  Aa

☒ Show Market Ticker

AUTO SAVE LAYOUT

- ☐ Automatically save layout changes
- ☐ Prompt to save layout changes
- ☒ Do not save layout changes

Apply Cancel

SETTINGS ▾ HELP ▾ LEGAL ▾ FIDELITY.COM 

General

Trade

Directed Trade

Orders

Positions / Watch Lists

Options (Underlying, Expiration & Strategy)

History

Option Chain

News

Alerts

# Accounts

- **The Accounts tab holds all of the account specific tools including:**
  - Positions
  - Balances
  - Options Summary
  - Account History





# Accounts

**Fidelity Active Trader Pro®** SETTINGS ▾ HELP ▾ LEGAL ▾ FIDELITY.COM   

Accounts Trade & Orders Quotes & Watch List Options News & Research Alerts Charts Layouts  11:02:12 AM ET

Accounts Trade & Orders

- Positions
- Options by Underlying
- Options by Strategy
- Options by Expiration
- Closed Positions
- Balances
- History
- Account Summary
- Find Position in All Accounts
- Portfolio Summary
- Portfolio Performance
- Statements
- Transfer Money
- BillPay
- Full View
- Account Features

History

Last 90 Days ▾ All Activity ▾

Symbol

Date ▾	Description	Symbol	Quantity	Price	Amount	Commission	Fees	Type	Settler
--------	-------------	--------	----------	-------	--------	------------	------	------	---------

05/18/2016 DIVIDEND RECEIVED

05/18/2016 Balances ▾

Positions ▾

As of 05/31/2016 09:47 AM ET

Total Account Value \$7,845.02 Today's G/L \$24.48 (0.32%) Total G/L \$4,430.02 (141.22%)

Manage ▾

	Symbol	Last	Chg	% Chg	Quantity	Purchase Price	Value	Tdy G/L	% Tdy G/L	G/L	% G/L
05/0		\$1.00	--	--	114.48	--	\$114.48	--	--	--	--
05/0		0.7238	0.00			0.873	82.86	0.55	0.67	-17.14	-17.14
04/2	TOTAL ACCOUNT VALUE	\$7,845.02									
04/2	Account Equity Percentage	100.00									
04/2	Cash	128.27	-0.95	-0.74	4,556	93.27	584.40	-4.33	-0.74	159.46	37.52
04/1	Cash (core)	5.53	0.13	2.41	1	12.32	5.53	0.13	2.41	-6.79	-55.11
03/1	Cash Credit/Debit	99.48	-0.81	-0.81	2.23	42.443	221.84	-1.81	-0.81	127.19	134.38
03/1	Securities Held in Cash	43.45	-0.28	-0.64	1,065	35.117	46.27	-0.21	-0.46	8.87	23.73
03/1	Margin	30.13	0.01	0.03	8,812	41.657	265.51	0.09	0.03	-101.58	-27.67
03/1	Margin Credit/Debit	737.30	4.64	0.63	4	203.347	2,949.20	18.56	0.63	2,135.81	262.58
03/1	Securities Held in Margin	750.85	3.25	0.43	4	204.532	3,003.40	13.00	0.43	2,185.27	267.11
03/0	Margin Interest Rate	79.89	-1.89	-2.38	1,076	76.189	85.96	-1.94	-2.20	3.98	4.86
03/0	Daily Margin Interest Accrued	52.28	-0.04	-0.08	1,111	30.162	58.08	-0.04	-0.08	24.57	73.33
03/0	Margin Interest Accrued (month to date)										
	Short										
	Short Credit	1.00	--	--	211.24	--	211.24	--	--	--	--
	Securities Held Short	39.095	0.105	0.27	2,081	37.851	81.36	0.22	0.27	2.59	3.28
	Daily Mark to Market	59.79	0.15	0.25	1,142	81.69	68.28	0.17	0.25	-25.01	-26.81
	AVAILABLE TO TRADE	42.80	0.12	0.28	1,162	106.497	49.73	0.14	0.28	-74.02	-59.81
	Margin Buying Power (Fully Marginable Securities)	\$8,500.00									
	Non-Margin Buying Power (Options, Mutual Funds, Penny Stocks)	\$4,200.00									
	Committed to Open Orders	\$0.00									
	Available to Trade without Margin Impact	\$277.95									
	TOTALS						7,778.26	24.48	0.32	4,430.02	141.22
	AVAILABLE TO WITHDRAW										
	Cash Only (Cash + Other Money Markets)	\$211.24									
	Cash & Borrowing on Margin	\$4,201.20									
	ADDITIONAL BALANCES										

Active Trader Pro® – For Illustrative Purposes Only

Active Trader Pro® – For Illustrative Purposes Only

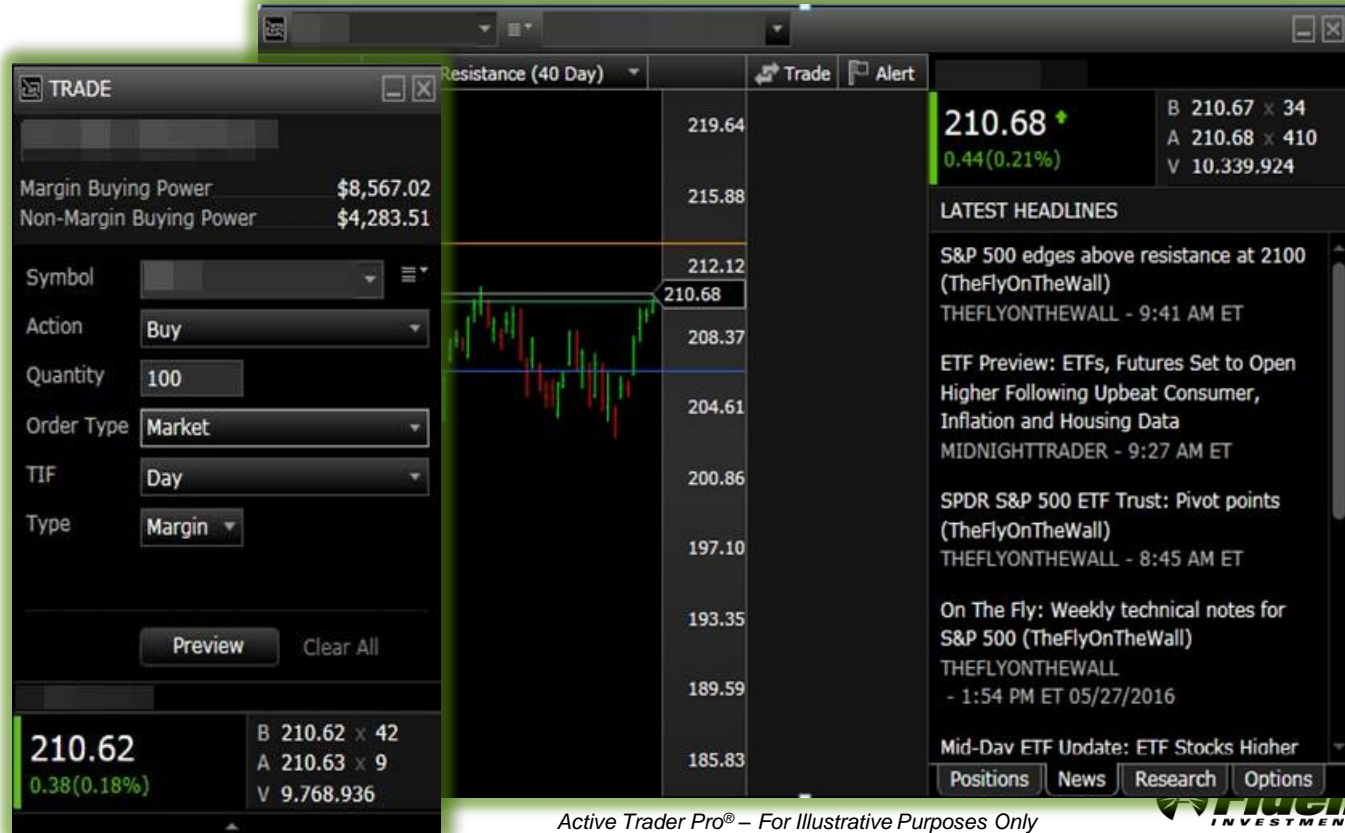
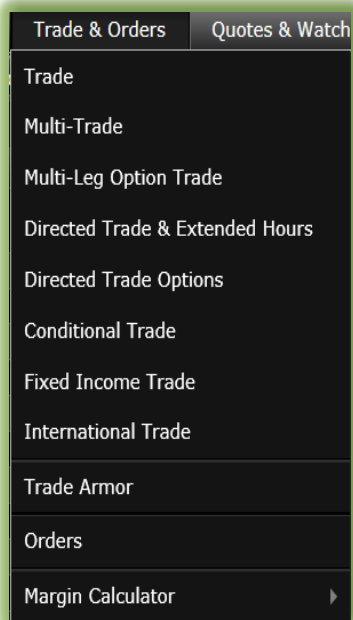


# Trade & Orders

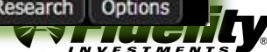
- **The Trade & Orders Tab holds all of the trading tickets including:**
  - Standard Trade Ticket
  - Directed Trading and Extended Hours Trading Ticket
  - Conditional Trade Ticket
  - Trade Armor®



# Trade & Orders



Active Trader Pro® – For Illustrative Purposes Only



# Quotes & Watch List

- **The Quotes and Watch List tab holds the historical information tools including:**
  - Quote windows
  - Time & Sales
  - Watch Lists



Fidelity

Active Trader Pro®

SETTINGS ▾

HELP ▾

LEGAL ▾

FIDELITY.COM

Accounts

Trade & Orders

Quotes & Watch List

Options

News & Research

Alerts

Charts

Layouts

Search

11:02:12 AM ET

The screenshot displays a complex financial trading interface with multiple panels:

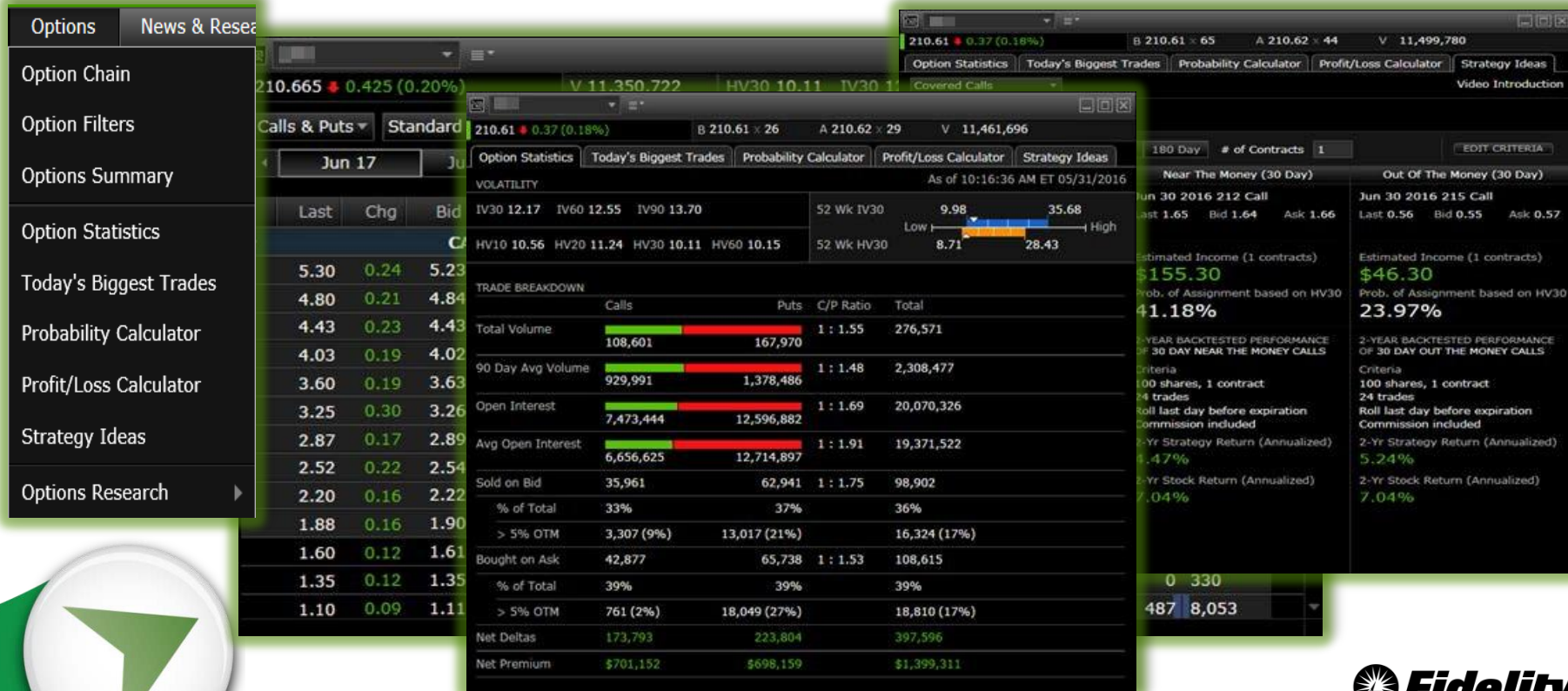
- Top Left Panel:** Shows the current stock price at **210.60**, with a green change of **0.36 (0.17%)**. It also lists recent trades: **B 210.59 x 94** and **A 210.60 x 11**.
- Top Right Panel:** Includes controls for **Date** (05/31/2016), **Hours** (Market Hours), **Prices** (All Prices), **Exchange** (All exchanges), and **Size** (All trade sizes).
- Middle Left Panel:** A summary of key statistics:
  - Open: 210.56
  - Day Range: 210.29 - 210.94
  - Div/Yield: 1.0496 / 3.60
  - Ex Div Date: 03/18/2016
  - Div Date: 04/29/2016
  - VWAP: 210.512
  - Close: 210.24
  - Shortable Shares: Show
  - EPS: 3.60
  - 52 Wk Lo: 181.02
  - 52 Wk Hi: 213.34
  - Last Trade Size: 1
  - 10-Day Vol: 88,725,900
  - 90-Day Vol: 111,720,000
  - Primary Exch: NYSE AR
  - Last Trade Exch: EDGX
  - Bid Exch: NYSE AR
  - Local Div: 1.0496 / 3.60
  - Ask Exch: NYSE AR
  - Condition: --
  - P/E Ratio: 58.40
  - Split Factor: 0.00
- Middle Right Panel (FILTERS):** Contains tabs for **Markets**, **Technicals**, and **Options**. The **Most Actives** tab is selected, showing a table of active stocks across all markets.
- Bottom Panel:** Displays a detailed table of market activity with columns: Symbol, Last, Chg, % Chg, Bid, Ask, Volume, and Descriptions. The table lists various symbols and their corresponding prices and volumes.
- Right Side Panel:** Shows a list of orders or quotes with columns: Bid Exchange, Ask Price, Ask Size, Ask Exchange, Trade Condition, and Volume. The volume column shows values like 10,778,845.

# Options

- **The Options tab holds all of the options specific tools including:**
  - Option Chain
  - Options Statistics
  - Profit/Loss Calculator
  - Probability Calculator
  - Strategy Ideas





**Fidelity Active Trader Pro®**

# News & Research

- **The News & Research tab contains all of the news and research tools available in both Active Trader Pro® & Fidelity.com**
- **Available directly in Active Trader Pro® are:**
  - News
  - Daily Dashboard
  - Bloomberg TV








# News & Research

**Fidelity Active Trader Pro®** SETTINGS ▾ HELP ▾ LEGAL ▾ FIDELITY.COM   

   Accounts Trade & Orders Quotes & Watch List Options News & Research Alerts Charts Layouts  Search 11:02:12 AM ET

News & Research Alerts

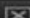
- News
- Bloomberg TV
- Daily Dashboard
- In the Money
- Viewpoints
- Notebook
- My Research
- Stocks ▾
- ETFs ▾
- Mutual Funds
- IPOs
- Fixed Income
- Annuities
- Markets & Sectors
- Economic Calendar
- MarketWatch MarketPulse
- Additional Resources ▾
- Strategy Testing
- Fidelity Investor Community
- Wealth Lab Community

**NEWS**   


New Search ▾ My News ▾ Saved Searches ▾

81.47 0.04 (0.05%) V 614,698


Form 4 PROCTER & GAMBLE Co For: May 27 Filed by: TASTAD CAROLYN M  
EDGAR SEC FILINGS - 9:46 AM ET  
These dividend 'kings' have had average annual returns of up to 21% for 25 years MARKETWATCH  
- 8:03 AM ET

▾ **Headline News**  Filters: OFF ▾

Market Chatter: Toyota Motor Corp Gains on Reports It's Close To Buying Google's Boston Dynamics Ur  
MIDNIGHTTRADER - 10:17 AM ET  
Press Release: The Conference Board Consumer Confidence Index Declined Again in May  
DJ BUSINESS NEWS - 10:15 AM ET  
U.S. stocks open slightly higher after strong economic data MARKETWATCH - 10:14 AM ET

▾ **Position News (All Acc)**  Filters: OFF ▾

Net Asset Value(s) BUSINESS WIRE - 10:18 AM ET  
Market Chatter: Toyota Motor Corp Gains on Reports It's Close To Buying Google's Boston Dyr  
MIDNIGHTTRADER - 10:17 AM ET  
S&PGR Rates Dutch ABS Deal VCL Master Netherlands DJ REALTIME NEWS - 10:08 AM ET  
RECORDATI ACQUIRES THE ITALIAN PHARMACEUTICAL COMPANY ITALCHIMICI

▾ **Watch List News (All L)**  Filters: OFF ▾

Market Chatter: Toyota Motor Corp Gains on Reports It's Close To Buying Google's Boston Dyr  
MIDNIGHTTRADER - 10:17 AM ET  
Icahn Takes Stake in Allergan DJ BUSINESS NEWS - 10:15 AM ET  
Exxon has restarted hydrotreater at Torrance, CA refinery REUTERS - 10:12 AM ET

# Alerts

- **The Alerts tab contains the alert generation tools:**
  - Price Alerts
  - Message Center
  - Real-Time Analytics



# Alerts

**Fidelity Active Trader Pro®** SETTINGS ▾ HELP ▾ LEGAL ▾ FIDELITY.COM [Icons] 11:02:12 AM ET

Accounts Trade & Orders Quotes & Watch List Options News & Research Alerts Charts Layouts [Search] [Time]

Alerts Charts Layout

Set Price Alert

Message Center

Real-time Analytics **Enhanced**

Communication Center

Manage Alerts

All Types ▾ Active ▾

- SEMPRA ENERGY's stock price has reached a new 26 week high - 10:20:59 AM ET
- Over the past 30 minutes CSX CORPORATION is out-performing the INDUSTRIAL sector - 10:20:02 AM ET
- Over the past 30 minutes CSX CORPORATION is out-performing the S&P 500 - 10:20:02 AM ET
- CSX CORPORATION is trading above its normal trading range - 10:20:02 AM ET
- CSX CORPORATION experienced a volume spike over the past 30 minutes - 10:19:18 AM ET
- Over the past 30 minutes BIOGEN INC is out-performing the NASDAQ 100 - 10:10:14 AM ET
- JACOBS ENGINEERING GROUP INC's stock price has reached a new 52 week high - 10:07:34 AM ET
- Over the past 30 minutes BIOGEN INC is out-performing the HEALTH CARE sector - 10:04:30 AM ET
- Over the past 30 minutes DEVON ENERGY CORP is out-performing the ENERGY sector - 10:03:32 AM ET

Alert Price Movement ▾

Rises Above \$ [Input]

Falls Below \$ [Input]

Update Delivery Options

Set Alert Clear All

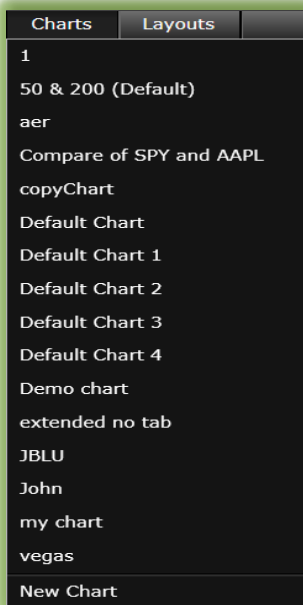
**210.62** B 210.61 x 53  
0.38 (0.18%) A 210.62 x 8  
V 12.191.522

# Charts

- **The Charts tab allows you to access the chart and all of its features.**
  - This tab also allows you to view and load saved charts



# Charts



# Introduction to Active Trader Pro®

This concludes today's presentation

***Thank you for attending!***

**Please join the Trading Strategy Desk® for our upcoming webinars:**

To register, please visit the Fidelitycom Learning Center <https://www.fidelity.com/webinars>

**For additional support, please contact a Fidelity representative at (877) 907-4429.**

